

# Supplement to “Uncertainty Quantification in Synthetic Controls with Staggered Treatment Adoption”

Matias D. Cattaneo\*   Yingjie Feng<sup>†</sup>   Filippo Palomba<sup>‡</sup>   Rocio Titiunik<sup>§</sup>

October 14, 2024

This supplement contains all proofs, additional results, other technical details about data preparation and estimation, and the code used to reproduce the results.

---

\*Department of Operations Research and Financial Engineering, Princeton University.

<sup>†</sup>School of Economics and Management, Tsinghua University.

<sup>‡</sup>Department of Economics, Princeton University.

<sup>§</sup>Department of Politics, Princeton University.

# Contents

<b>S.1 Notation</b>	<b>3</b>
<b>S.2 Other Strategies for Uncertainty Quantification</b>	<b>3</b>
S.2.1 Out-of-Sample Error . . . . .	3
S.2.2 Simultaneous Prediction Intervals . . . . .	4
S.2.3 Alternative Bounds for In-sample Error . . . . .	4
<b>S.3 Linear Factor Model Justification</b>	<b>6</b>
<b>S.4 Proofs</b>	<b>7</b>
S.4.1 Proof of Corollary 1 . . . . .	7
S.4.2 Proof of Theorem 1 . . . . .	9
S.4.3 Verification of Condition (i) in Theorem 1 . . . . .	10
S.4.4 Proof of Lemma 1 . . . . .	11
<b>S.5 Second Order Cone Programming</b>	<b>13</b>
S.5.1 Families of convex optimization problems . . . . .	13
S.5.2 Link between QCQP and SOCPs. . . . .	14
S.5.3 Specific Synthetic Control Problems as SOCPs . . . . .	15
<b>S.6 Data Preparation and Software Implementation</b>	<b>18</b>
S.6.1 Data Description . . . . .	18
S.6.2 Implementation details . . . . .	19
S.6.2.1 Summary of Algorithmic Implementation . . . . .	19
S.6.2.2 Specifics of Empirical Application . . . . .	20
<b>S.7 Robustness Checks</b>	<b>24</b>
S.7.1 Ridge-type constraint . . . . .	25
S.7.2 Simplex-type constraint . . . . .	29
S.7.3 Multiple Features . . . . .	33
S.7.4 Placebo Treatment Date . . . . .	37
S.7.5 Leave-one-donor-out . . . . .	41

## S.1 Notation

We summarize the notation used throughout the paper in the following table.

**Table S.1:** *Summary of Notation*

Quantity	Description
$\tau_{ik}$	time-specific unit-specific predictand
$\bar{\tau}_i$	time-averaged unit-specific predictand
$\tau_{Qk}$	time-specific unit-averaged predictand
$\bar{\tau}$	time-averaged unit-averaged predictand
$\mathcal{N}$	set of never-treated units
$\mathcal{E}$	set of ever-treated units
$\mathcal{W}^{[i]}$ or $\mathcal{W}$	constraint set imposed in SC construction
$J_0$	number of never-treated units
$J_1$	number of ever-treated units
$Q$	number of units in $\mathcal{Q}$
$Y_{it}$	real GDP per capita of country $i$ in year $t$
$\mathbf{Y}_{\mathcal{N}t}$	a vector of outcomes of never-treated (donor) units
$u_{it}$	out-of-sample error in decomposition of $\hat{Y}_{it}$
$\varrho_\ell^{[i]}$	tuning parameter used to check if the $\ell$ -th constraint is binding
$\varepsilon_\Delta$	tuning parameter used to adjust for nonlinear constraints
$\mathcal{M}_{\hat{\gamma}}^{[i]}$ or $\mathcal{M}_{\hat{\gamma}}$	feasible set for SC weights deduced from optimization
$\mathcal{M}_{\mathbf{G}}^{[i]*}$ or $\mathcal{M}_{\mathbf{G}}^*$	feasible set used for in-sample uncertainty quantification
$\Delta^{[i]}$ or $\Delta$	centered constraint set
$ \mathcal{A} $	number of elements in a set $\mathcal{A}$
$\times_{i \in \mathcal{S}} \mathcal{A}_i$	Cartesian product of sets $\mathcal{A}_i$ 's for $i \in \mathcal{S}$
$\ \cdot\ _1, \ \cdot\ _2$	L1 and L2 vector norms
$s_{\min}(\mathbf{A}), s_{\max}(\mathbf{A})$	minimum and maximum singular values of a matrix $\mathbf{A}$
$(v_j : j \in \mathcal{A})$	a vector consisting of all $v_j$ 's with $j \in \mathcal{A}$
$\otimes$	Kronecker product
subscripts in, out	“in-sample”, “out-of-sample”
superscript $[i]$	indicate a quantity is related to a treated unit $i$
lower bar, upper bar	“lower bound”, “upper bound”
$\star$	indicate a quantity is related to simulation

## S.2 Other Strategies for Uncertainty Quantification

### S.2.1 Out-of-Sample Error

In Section 4.2 we discuss the approach for quantifying the out-of-sample uncertainty based on the non-asymptotic bounds. We briefly describe two strategies below.

- *Location-scale model.* Suppose that  $u_{it} = \mathbb{E}[u_{it}|\mathcal{H}] + (\mathbb{V}[u_{it}|\mathcal{H}])^{1/2}\varepsilon_{it}$  with  $\varepsilon_{it}$  statistically independent of  $\mathcal{H}$ . The bounds on  $u_{it}$  can now be set to  $\underline{M}_{\text{out}} = \mathbb{E}[u_{it}|\mathcal{H}] + (\mathbb{V}[u_{it}|\mathcal{H}])^{1/2}\mathbf{c}_\varepsilon(\alpha_{\text{out}}/2)$  and  $\bar{M}_{\text{out}} = \mathbb{E}[u_{it}|\mathcal{H}] + (\mathbb{V}[u_{it}|\mathcal{H}])^{1/2}\mathbf{c}_\varepsilon(1 - \alpha_{\text{out}}/2)$  where  $\mathbf{c}_\varepsilon(\alpha_{\text{out}}/2)$  and  $\mathbf{c}_\varepsilon(1 - \alpha_{\text{out}}/2)$  are  $\alpha_{\text{out}}/2$  and  $(1 - \alpha_{\text{out}}/2)$  quantiles of  $\varepsilon_{it}$ , respectively, and  $\alpha_{\text{out}}$  is the desired pre-specified level.
- *Quantile regression.* We can determine the  $\alpha_{\text{out}}/2$  and  $(1 - \alpha_{\text{out}}/2)$  conditional quantiles of  $u_{it}|\mathcal{H}$ . Consequently, another possibility is to employ quantile regression methods to estimate those quantities using pre-treatment data.

### S.2.2 Simultaneous Prediction Intervals

Section 4.4 constructs prediction intervals with simultaneous coverage. We briefly describe two other common approaches below.

- *Bonferroni-type correction.* There is a large literature on Bonferroni corrections that can be used to construct multiple prediction intervals with simultaneous coverage. For example, consider a simple correction strategy: for each  $k = 0, \dots, L$ , use any strategy described in Section 4.2 or Section S.1.1 to construct a prediction interval for  $u_{i(T_i+k)}$  that has coverage probability at least  $1 - (\alpha_{\text{out}}/(L + 1))$ . Then, the simultaneous coverage probability of the  $L + 1$  prediction intervals  $\{\tilde{\mathcal{I}}_k : 0 \leq k \leq L\}$  is at least  $1 - \alpha_{\text{out}}$ . Some other more sophisticated corrections are also available in the literature (see, e.g., [Ravishanker et al., 1987](#)). For instance, the second-order Bonferroni-type bound implies that

$$\mathbb{P}[u_{i(T_i+k)} \in \tilde{\mathcal{I}}_k \text{ for all } 0 \leq k \leq L \mid \mathcal{H}] \geq 1 - \sum_{k=0}^L p_k + \sum_{k=0}^{L-1} p_{k,k+1}, \quad \text{where}$$

$$p_k = \mathbb{P}(u_{i(T_i+k)} \in \tilde{\mathcal{I}}_k \mid \mathcal{H}), \quad p_{k,k+1} = \mathbb{P}(u_{i(T_i+k)} \in \tilde{\mathcal{I}}_k, u_{i(T_i+k+1)} \in \tilde{\mathcal{I}}_{k+1} \mid \mathcal{H}).$$

Then, one can construct the prediction intervals  $\tilde{\mathcal{I}}_k$ 's with corresponding coverage probabilities  $p_k$  and  $p_{k,k+1}$  such that  $1 - \sum_{k=0}^L p_k + \sum_{k=0}^{L-1} p_{k,k+1} \geq 1 - \alpha_{\text{out}}$ . Such bounds are usually sharper, but their implementation requires the modeling of the dependence of  $(u_{it}, u_{i(t+1)})$  conditional on  $\mathcal{H}$  and is computationally more burdensome.

- *Scheffé-type intervals.* An alternative approach is to construct Scheffé-type simultaneous prediction intervals, though stronger distributional assumptions need to be made. For instance, assume that  $(u_{iT_i}, \dots, u_{i(T_i+L)})'$  jointly follows a conditional Gaussian distribution with mean zero and variance  $\Sigma_{\mathcal{H}}$ . Then,

$$(u_{i(T_i)}, \dots, u_{i(T_i+L)}) \Sigma_{\mathcal{H}}^{-1} (u_{i(T_i)}, \dots, u_{i(T_i+L)})' \sim \chi_{L+1}^2,$$

where  $\chi_{L+1}^2$  is  $\chi^2$  distribution with  $L + 1$  degrees of freedom. The sequence of prediction intervals  $\tilde{\mathcal{I}}_k = \left[ -\sigma_{\mathcal{H},kk} \sqrt{\chi_{L+1}^2(1 - \alpha_2)}, \sigma_{\mathcal{H},kk} \sqrt{\chi_{L+1}^2(1 - \alpha_2)} \right]$  have the simultaneous coverage probability at least  $1 - \alpha_2$ , where  $\sigma_{\mathcal{H},kk}^2$  is the  $k$ -th diagonal element of  $\Sigma_{\mathcal{H}}$  and  $\chi_{L+1}^2(1 - \alpha_2)$  is the  $(1 - \alpha_{\text{out}})$ -quantile of  $\chi^2$  distribution with  $L + 1$  degrees of freedom.

### S.2.3 Alternative Bounds for In-sample Error

When the causal predictand of interest depends on treatment effects on *multiple* treated units, such as the time-specific unit-averaged predictand  $\tau_{Qk}$ , there is an alternative method for in-sample uncertainty quantification that may yield tighter prediction intervals. It relies on the fact that if the SC weights  $\hat{\beta}^{[i]}$  for each ever-treated unit  $i$  are obtained through a *separate* optimization process using data  $\mathbf{A}^{[i]}$ ,  $\mathbf{B}^{[i]}$  and  $\mathbf{C}^{[i]}$ , then, as outlined in Remark 4.1, a sequence of restrictions must be obeyed: for each  $i \in \mathcal{E}$ ,

$$(\hat{\beta}^{[i]} - \beta_0^{[i]})' \hat{\mathbf{Q}}^{[i]} (\hat{\beta}^{[i]} - \beta_0^{[i]}) - 2(\hat{\gamma}^{[i]} - \gamma^{[i]})' (\hat{\beta}^{[i]} - \beta_0^{[i]}) \leq 0, \quad \hat{\beta}^{[i]} - \beta_0^{[i]} \in \Delta^{[i]}. \quad (\text{S.2.1})$$

Then, analogously to (6.5), for any predictand  $\tau$  defined before, we can set

$$\begin{aligned} \underline{M}_{\text{in}}(\tau) &= (\alpha_{\text{in}}/2)\text{-quantile of } \inf_{\boldsymbol{\delta} \in \tilde{\mathcal{M}}_{\mathbf{G}}^*} -\mathbf{p}'_{\tau} \boldsymbol{\delta} \quad \text{and} \\ \overline{M}_{\text{in}}(\tau) &= (1 - \alpha_{\text{in}}/2)\text{-quantile of } \sup_{\boldsymbol{\delta} \in \tilde{\mathcal{M}}_{\mathbf{G}}^*} -\mathbf{p}'_{\tau} \boldsymbol{\delta} \end{aligned} \tag{S.2.2}$$

conditional on the data, with  $\tilde{\mathcal{M}}_{\mathbf{G}}^* = \{\boldsymbol{\delta} = (\boldsymbol{\delta}^{[1]'}, \dots, \boldsymbol{\delta}^{[J_1]'})' : \boldsymbol{\delta}^{[i]} \in \Delta^{[i]*}, \boldsymbol{\delta}^{[i]'} \widehat{\mathbf{Q}}^{[i]} \boldsymbol{\delta}^{[i]} - 2(\mathbf{G}^{[i]*})' \boldsymbol{\delta}^{[i]} \leq 0, i \in \mathcal{E}\}$  and  $\mathbf{G}^* = (\mathbf{G}^{[1]'}, \dots, \mathbf{G}^{[J_1]'})' | \text{Data} \sim \mathbf{N}(\mathbf{0}, \widehat{\boldsymbol{\Sigma}})$ . Again,  $\Delta^{[i]}$  is replaced with its feasible version  $\Delta^{[i]*}$ , and  $\widehat{\boldsymbol{\gamma}}^{[i]} - \boldsymbol{\gamma}^{[i]}$  is replaced with the approximating Gaussian vector  $\mathbf{G}^{[i]*}$ . As a reminder, this strategy is not equivalent to doing in-sample uncertainty quantification for each time-specific unit-specific prediction  $\widehat{\tau}_{ik}$  and then combining their bounds together, since the whole vector  $\mathbf{G}^*$  has the same covariance as  $\widehat{\boldsymbol{\gamma}} = (\widehat{\boldsymbol{\gamma}}^{[1]'}, \dots, \widehat{\boldsymbol{\gamma}}^{[J_1]'})'$ , thus maintaining the correlation structure among different treated units.

Technically, the above optimization procedure for constructing SC weights is equivalent to a special case of (6.1), where the weighting matrix  $\mathbf{V}$  is block diagonal, taking the form  $\mathbf{V} = \text{diag}(\mathbf{V}^{[1]}, \dots, \mathbf{V}^{[J_1]})$ , and the feasible set  $\Delta = \mathcal{W} \times \mathcal{R}$  is the Cartesian product of  $\Delta^{[i]} = \mathcal{W}^{[i]} \times \mathcal{R}^{[i]}$  for each subvector  $\boldsymbol{\beta}^{[i]}$  (hence, there is no cross-treated-unit constraint). The general in-sample uncertainty quantification strategy presented earlier in (6.5) relies on the fact that  $(\widehat{\boldsymbol{\beta}} - \boldsymbol{\beta}_0)' \widehat{\mathbf{Q}} (\widehat{\boldsymbol{\beta}} - \boldsymbol{\beta}_0) - 2(\widehat{\boldsymbol{\gamma}} - \boldsymbol{\gamma})' (\widehat{\boldsymbol{\beta}} - \boldsymbol{\beta}_0) = \sum_{i \in \mathcal{E}} [(\widehat{\boldsymbol{\beta}}^{[i]} - \boldsymbol{\beta}_0^{[i]})' \widehat{\mathbf{Q}}^{[i]} (\widehat{\boldsymbol{\beta}}^{[i]} - \boldsymbol{\beta}_0^{[i]}) - 2(\widehat{\boldsymbol{\gamma}}^{[i]} - \boldsymbol{\gamma}^{[i]})' (\widehat{\boldsymbol{\beta}}^{[i]} - \boldsymbol{\beta}_0^{[i]})] \leq 0$  and  $\widehat{\boldsymbol{\beta}} - \boldsymbol{\beta}_0 \in \Delta = \times_{i \in \mathcal{E}} \Delta^{[i]}$ , which are immediately implied by (S.2.1). In this sense, the restriction (S.2.1) is stricter, making the alternative bounds in (S.2.2) tighter (or at least no looser) than those in (6.5). Table S.2 quantifies the gains from this restriction in terms of the length of the prediction intervals in our leading empirical application.

**Table S.2:** *Achieved reduction in the prediction intervals length with separate optimization.*

$\mathcal{W}$	Ridge		Simplex		L1-L2	
	$M = 1$	$M = 2$	$M = 1$	$M = 2$	$M = 1$	$M = 2$
Predictand						
<i>All treated units</i>						
$\tau_{ik}$ , Figure 3(a)	42.94 [15.79; 92.06]	53.92 [31.59; 79.7]	60.33 [16.85; 96.8]	60.97 [36.48; 91.81]	59.72 [12.31; 97.01]	59.73 [37.23; 92.31]
$\tau_i$ , Figure 4(a)	44.01 [21.43; 87.9]	55.72 [37.93; 73.03]	61.25 [23.09; 96.22]	60.77 [41.81; 82.28]	60.27 [13.99; 96.5]	60.17 [42.03; 83.15]
$\tau_k$ , Figure 6(a)	94.11 [93.95; 94.22]	93.97 [93.91; 94.09]	94.69 [94.61; 95.15]	94.19 [94.13; 94.27]	94.86 [94.64; 95]	94.28 [94.16; 94.33]
<i>Countries Liberalized Before 1987</i>						
$\tau_{Q_1k}$ , Figure 5(a)	76.81 [76.66; 77.07]	79.71 [78.23; 79.91]	79.2 [78.4; 80.45]	76.66 [76.36; 77.06]	79.19 [78.35; 79.71]	77.89 [77.56; 78.32]
<i>Countries Liberalized in 1987-1991</i>						
$\tau_{Q_2k}$ , Figure 5(c)	84.74 [84.32; 85.03]	84.76 [84.7; 84.82]	86.01 [85.44; 86.39]	85.92 [85.6; 86.03]	86.62 [86.23; 86.77]	85.68 [85.46; 86.02]
<i>Countries Liberalized After 1991</i>						
$\tau_{Q_3k}$ , Figure 5(e)	76.81 [76.66; 77.07]	79.71 [78.23; 79.91]	79.2 [78.4; 80.45]	76.66 [76.36; 77.06]	79.19 [78.35; 79.71]	77.89 [77.56; 78.32]

*Notes:* For each target predictand we report the median percentage change in the length of the prediction intervals, whereas in brackets we report the minimum and maximum change, respectively. The reported statistics are computed across horizons and/or treated units. We computed the percentage change of the prediction intervals without out-of-sample uncertainty.

Due to the complexity of the feasibility set  $\tilde{\mathcal{M}}_{\mathbf{G}}^*$ , the alternative bounds (S.2.2) may not be theoretically justified using the same argument for (6.5). However, other techniques, such as strong approximations, can be employed to establish the validity of (S.2.2), albeit at the expense of

additional technical complexity. We do not pursue further justification of (S.2.2) and leave it for future research.

### S.3 Linear Factor Model Justification

There are different ways to justify the synthetic control method, including the cointegrated system motivated by our empirical application. In this section, we briefly discuss an alternative justification that assumes the data are generated through a linear factor model:

$$Y_{it}(\infty) = \lambda_t \mu_i + \varepsilon_{it}, \quad 1 \leq i \leq N, 1 \leq t \leq T.$$

For simplicity, assume that only the first unit is treated, the common factor  $\lambda_t$  is i.i.d. over  $1 \leq t \leq T$ ,  $\varepsilon_{it}$  is i.i.d. across  $1 \leq i \leq N$  and over  $1 \leq t \leq T$ , and  $\{\lambda_t : 1 \leq t \leq T\}$  and  $\{\varepsilon_{it} : 1 \leq i \leq N, 1 \leq t \leq T\}$  are independent of each other. In addition, we assume that  $\mathbb{E}[\varepsilon_{it}] = 0$ , the factor loadings  $\{\mu_i\}_{i=1}^N$  are fixed, and only the pre-intervention outcomes are used in the SC construction. Then,  $\mathcal{H} = \{(Y_{2t}(\infty), \dots, Y_{Nt}(\infty)) : 1 \leq t \leq T\}$ . Accordingly,  $\mathbf{w}_0$  is given by the following expression:

$$\mathbf{w}_0 = \arg \min_{\mathbf{w} \in \mathcal{W}} \frac{1}{T_0} \sum_{t=1}^{T_0} \mathbb{E} \left[ \left( (\mu_1 - \boldsymbol{\mu}'_c \mathbf{w}) \lambda_t + (\varepsilon_{1t} - \boldsymbol{\varepsilon}'_{t,c} \mathbf{w}) \right)^2 \middle| \mathcal{H} \right],$$

where  $\boldsymbol{\mu}_c = (\mu_2, \dots, \mu_N)'$  and  $\boldsymbol{\varepsilon}_{t,c} = (\varepsilon_{2t}, \dots, \varepsilon_{Nt})'$ , assuming the expectation (exists and) is finite. Define  $\mathcal{H}_t = \{Y_{2t}(\infty), \dots, Y_{Nt}(\infty)\}$ . Then,  $\mathbf{w}_0$  can be further written as

$$\begin{aligned} \mathbf{w}_0 = \arg \min_{\mathbf{w} \in \mathcal{W}} \left\{ \frac{1}{T_0} \sum_{t=1}^{T_0} \mathbb{E}[\lambda_t^2 | \mathcal{H}_t] (\mu_1 - \boldsymbol{\mu}'_c \mathbf{w})^2 + \mathbb{E}[\varepsilon_{11}^2] + \mathbf{w}' \left( \frac{1}{T_0} \sum_{t=1}^{T_0} \mathbb{E}[\boldsymbol{\varepsilon}_{t,c} \boldsymbol{\varepsilon}'_{t,c} | \mathcal{H}_t] \right) \mathbf{w} \right. \\ \left. - 2(\mu_1 - \boldsymbol{\mu}'_c \mathbf{w}) \left( \frac{1}{T_0} \sum_{t=1}^{T_0} \mathbb{E}[\lambda_t \boldsymbol{\varepsilon}'_{t,c} | \mathcal{H}_t] \right) \mathbf{w} \right\}, \end{aligned}$$

assuming these expectations are finite. Given our assumptions on  $\lambda_t$  and  $\varepsilon_{it}$ , we expect that

$$\frac{1}{T_0} \sum_{t=1}^{T_0} \mathbb{E}[\lambda_t^2 | \mathcal{H}_t] \approx \mathbb{E}[\lambda_t^2], \quad \frac{1}{T_0} \sum_{t=1}^{T_0} \mathbb{E}[\boldsymbol{\varepsilon}_{t,c} \boldsymbol{\varepsilon}'_{t,c} | \mathcal{H}_t] \approx \mathbb{E}[\varepsilon_{11}^2] \mathbf{I}_{N-1}, \quad \text{and} \quad \frac{1}{T_0} \sum_{t=1}^{T_0} \mathbb{E}[\lambda_t \boldsymbol{\varepsilon}'_{t,c} | \mathcal{H}_t] \approx \mathbf{0}$$

with high probability when  $T_0$  is large, which can be shown under additional moment conditions. As a consequence, our expression for  $\mathbf{w}_0$  is similar to that in [Ferman and Pinto \(2021\)](#).

Then, the in-sample error for the prediction of the TSUS effect  $\tau_{1k}$  is given by

$$\text{InErr}(\tau_{1k}) = -\mathbf{Y}'_{\mathcal{N}t}(\widehat{\mathbf{w}} - \mathbf{w}_0),$$

which represents the error in estimating the weights. The out-of-sample error is given by

$$\text{OutErr}(\tau_{1k}) = Y_{1(T_1+k)} - \mathbf{Y}'_{\mathcal{N}(T_1+k)} \mathbf{w}_0 = \varepsilon_{1(T_1+k)} - \boldsymbol{\varepsilon}'_{T_1+k,c} \mathbf{w}_0 + (\mu_1 - \boldsymbol{\mu}'_c \mathbf{w}_0) \lambda_{T_1+k}.$$

The first term  $\varepsilon_{1(T_1+k)}$  represents the treated unit's innovation in the post-treatment period  $T_1 + k$ ; the second term  $\boldsymbol{\varepsilon}'_{T_1+k,c} \mathbf{w}_0$  represents the weighted average of the innovations for the donor units in the post-treatment period  $T_1 + k$ ; and the third term  $(\mu_1 - \boldsymbol{\mu}'_c \mathbf{w}_0) \lambda_{T_1+k}$  can be thought of as the

impact of the “bias” of the SC weights in  $T_1 + k$ , if one thinks the target weight in this context is the one recovering the true factor loading  $\mu_1$  of the treated unit. Given the conditions imposed, our method is still applicable to this scenario, and importantly, the “bias” due to  $(\mu_1 - \boldsymbol{\mu}'_c \mathbf{w}_0)\lambda_{T_1+k}$  is taken into account.

## S.4 Proofs

### S.4.1 Proof of Corollary 1

*Proof.* We only need to verify the conditions in Theorem 1. The proof is divided into several steps.

**Step 0:** We first give several useful facts. The SC construction considered in this corollary is a special case of that considered in Theorem 1, where the weighting matrix is an identity matrix, and there is only one feature to be matched (GDP per capita) and no additional covariates. As shown in the main paper, for any  $\hat{\tau} \in \{\hat{\tau}_{ik}, \hat{\tau}_i, \hat{\tau}_{Qk}, \hat{\tau}_\cdot\}$ , the in-sample error can always be expressed as  $\mathbf{p}'_\tau(\hat{\mathbf{w}} - \mathbf{w}_0)$ . For any  $\kappa$ , define  $\mathcal{A}_\kappa = \{\boldsymbol{\xi} : \sup_{\boldsymbol{\delta} \in \mathcal{M}_\xi} \mathbf{p}'_\tau \boldsymbol{\delta} \leq \kappa\}$ , which is convex by Lemma 2 of Cattaneo et al. (2021). Let  $d = J_0 J_1$ , and  $\mathfrak{C}_1, \mathfrak{C}_2, \dots$  denote some constant independent of  $T_0$ .

**Step 1:** We want to verify condition (i) in Theorem 1. Without loss of generality, we only consider the upper bound in this step, and the lower bound follows similarly. So our goal is to bound  $|\mathbb{P}(\hat{\boldsymbol{\gamma}} - \boldsymbol{\gamma} \in \mathcal{A}_\kappa | \mathcal{H}) - \mathbb{P}(\mathbf{G} \in \mathcal{A}_\kappa | \mathcal{H})|$ .

Note that by Assumption 1,  $u_{it}$  is independent conditional on  $\mathcal{H}$ . To simplify expressions, assume in this proof that  $\boldsymbol{\gamma} = 0$ , and define  $\tilde{u}_{it} = u_{it}$  if  $t \leq T_i - 1$  and  $\tilde{u}_{it} = 0$  if  $t > T_i - 1$ . So we can write  $\hat{\boldsymbol{\gamma}} = (\sum_{t=1}^{T_1-1} \mathbf{Y}'_{\mathcal{N}t} u_{1t}, \dots, \sum_{t=1}^{T_{J_1}-1} \mathbf{Y}'_{\mathcal{N}t} u_{J_1 t})' = \sum_{t=1}^{T_{J_1}} (\mathbf{I}_{J_1} \otimes \mathbf{Y}_{\mathcal{N}t}) \tilde{u}_t$  where  $\tilde{u}_t = (u_{1t}, \dots, u_{J_1 t})'$ .

Applying the Berry-Esseen theorem for convex sets (Raić, 2019),

$$|\mathbb{P}(\hat{\boldsymbol{\gamma}} - \boldsymbol{\gamma} \in \mathcal{A}_\kappa | \mathcal{H}) - \mathbb{P}(\mathbf{G} \in \mathcal{A}_\kappa | \mathcal{H})| \leq 42(d^{1/4} + 16)\sqrt{J_1} \|\boldsymbol{\Sigma}^{-1/2}\|^3 \sum_{t=1}^{T_{J_1}} \mathbb{E} \left[ \sum_{i=1}^{J_1} \left\| \mathbf{Y}_{\mathcal{N}t} u_{it} \right\|^3 \middle| \mathcal{H} \right].$$

Given condition (i) in the corollary, we only need to bound  $\sum_{t=1}^{T_{J_1}} \|\mathbf{Y}_{\mathcal{N}t}\|^3$  and  $\|\boldsymbol{\Sigma}^{-1}\|$ . First note that

$$\frac{1}{T_0^3} \sum_{t=1}^{T_{J_1}} \|\mathbf{Y}_{\mathcal{N}t}\|^3 \leq \frac{\sqrt{J_0}}{T_0^{3/2}} \sum_{t=1}^{T_{J_1}} \sum_{j \in \mathcal{N}} |Y_{jt}/\sqrt{T_0}|^3,$$

By Assumption 1, each  $\mathbf{Y}_{\mathcal{N}t}$  can be understood as a multivariate partial sum process indexed by  $t$ . By strong approximation of partial sum processes (e.g., Lemma 2.2 of Chang et al., 2006),

$$\mathbb{P} \left( \max_{1 \leq t \leq T_0} \|T_0^{-1/2} \mathbf{Y}_{\mathcal{N}t} - \tilde{\mathbf{G}}(t/T_0)\| \geq T_0^{-0.1} \right) \leq \mathfrak{C}_1 T_0^{-1},$$

where  $\tilde{\mathbf{G}}(\cdot)$  is a  $J_0$ -dimensional Brownian motion on  $[0, 1]$  with the variance  $\mathbb{E}[\mathbf{v}_t \mathbf{v}'_t]$ . On the other hand, it is well known that for each  $1 \leq j \leq J_0$ , for any  $m > 0$ ,

$$\mathbb{P} \left( \max_{0 \leq r \leq 1} |\tilde{G}_j(r)| > m \right) \leq 2\mathbb{P} \left( \max_{0 \leq r \leq 1} \tilde{G}_j(r) > m \right) = 2\mathbb{P}(|G_j(1)| > m),$$

where  $\tilde{G}_j(\cdot)$  is the  $j$ -th element of  $\tilde{\mathbf{G}}(\cdot)$ . Using the tail bound for Gaussian distributions, we can set  $m = \sqrt{2 \log(2J_0 T_0) \sigma_{\max}^2}$  where  $\sigma_{\max}^2$  is the largest variance of  $\{v_{jt} : 1 \leq j \leq J_0\}$ , which leads to

$\max_{0 \leq r \leq 1} |G_j(r)| \leq m$  with probability over  $\mathcal{H}$  at least  $1 - (J_0 T_0)^{-1}$ . Therefore,

$$\frac{1}{T_0^3} \sum_{t=1}^{T_0} \|\mathbf{Y}_{\mathcal{N}t}\|^3 \leq J_0^{3/2} T_0^{-1/2} \left( \sqrt{2 \log(2J_0 T_0) \sigma_{\max}^2} + T_0^{-0.1} \right)^3$$

with probability over  $\mathcal{H}$  at least  $1 - T_0^{-1} - \mathfrak{C}_1 T_0^{-1}$ . In addition, note that  $\frac{1}{T_0^3} \sum_{t=T_0+1}^{T_{J_1}} \|\mathbf{Y}_{\mathcal{N}t}\|^3 \leq \frac{4}{T_0^3} \sum_{t=T_0+1}^{T_{J_1}} (\|\mathbf{Y}_{\mathcal{N}T_0}\|^3 + \|\sum_{s=T_0+1}^t \mathbf{v}_s\|^3)$ . Then, by the previous result and sub-Gaussianity of  $\mathbf{v}_t$ , we conclude that with probability at least  $1 - \mathfrak{C}_\pi T_0^{-1}$  for some constant  $\mathfrak{C}_\pi > 0$ ,

$$\frac{1}{T_0^3} \sum_{t=1}^{T_{J_1}} \|\mathbf{Y}_{\mathcal{N}t}\|^3 \leq J_0^{3/2} (T_0^{-1/2} + \mathfrak{C}_2 T_0^{-3/2} + \mathfrak{C}_3) \left( \sqrt{2 \log(2J_0 T_0) \sigma_{\max}^2} + T_0^{-0.1} \right)^3.$$

Finally, we consider  $\Sigma$ . By assumption in the corollary,  $s_{\min}(\Sigma) \geq \eta \widehat{\mathbf{Q}}$ . Recall that  $\widehat{\mathbf{Q}} = \text{diag}(\widehat{\mathbf{Q}}^{[1]}, \dots, \widehat{\mathbf{Q}}^{[J_1]})$ . Again, by strong approximation used previously, with probability over  $\mathcal{H}$  at least  $1 - \mathfrak{C}_\pi T_0^{-1}$ ,

$$\left\| \frac{1}{T_0^2} \sum_{t=1}^{T_0} \mathbf{Y}_{\mathcal{N}t} \mathbf{Y}'_{\mathcal{N}t} - \frac{1}{T_0} \sum_{t=1}^{T_0} \tilde{\mathbf{G}}\left(\frac{t}{T_0}\right) \tilde{\mathbf{G}}\left(\frac{t}{T_0}\right)' \right\| \leq 2\sqrt{J_0} T_0^{-0.1} (m + T_0^{-0.1}).$$

Then, by the condition in the corollary, with probability over  $\mathcal{H}$  at least  $1 - \pi_0 - \mathfrak{C}_\pi T_0^{-1}$ ,  $s_{\min}(\widehat{\mathbf{Q}}^{[1]}) \geq \frac{2}{3} (\log T_0)^{-1/5} T_0^2$  for  $T_0$  large enough. For other blocks  $\widehat{\mathbf{Q}}^{[j]}$  with  $j \neq 1$ , using the previous results about the bound on  $\mathbf{Y}_{\mathcal{N}t}$ , we have with probability  $1 - \mathfrak{C}_\pi T_0^{-1}$ ,  $\|\widehat{\mathbf{Q}}^{[j]} - \widehat{\mathbf{Q}}^{[1]}\| \leq \mathfrak{C}_4 (m + T_0^{-0.1})^2 T_0$ . Therefore, we can conclude that with probability over  $\mathcal{H}$  at least  $1 - \pi_0 - \mathfrak{C}_\pi T_0^{-1}$ ,  $s_{\min}(\widehat{\mathbf{Q}}) \geq (\log T_0)^{-1/5} T_0^2 / 2$  for  $T_0$  large enough.

Therefore, we can take  $\pi_\gamma = \pi_0 + \mathfrak{C}_\pi T_0^{-1}$  and  $\epsilon_\gamma = \mathfrak{C}_\epsilon (\log T_0)^2 T_0^{-1/2}$  for some non-negative finite constant  $\mathfrak{C}_\epsilon$  implied by the previous calculations.

**Step 2:** Consider condition (ii) in Theorem 1. We have the following basic inequality hold:

$$\lambda_{\min}(\mathfrak{D}_T^{-1} \widehat{\mathbf{Q}} \mathfrak{D}_T^{-1}) \|\mathfrak{D}_T \delta\|^2 \leq \delta \widehat{\mathbf{Q}} \delta \leq 2\mathbf{G}' \delta \leq 2\|\mathfrak{D}_T^{-1} \mathbf{G}\| \|\mathfrak{D}_T \delta\|.$$

where  $\mathfrak{D}_T = \text{diag}((T_1 - 1)\mathbf{I}_{T_1-1}, \dots, (T_{J_1} - 1)\mathbf{I}_{T_{J_1}-1})$ . By condition (ii) imposed in the corollary and the argument given in Step 1,  $s_{\min}(\mathfrak{D}_T^{-1} \widehat{\mathbf{Q}} \mathfrak{D}_T^{-1}) \geq (\log T_0)^{-1/5} / 2$  and  $\lambda_{\max}(\mathfrak{D}_T^{-1} \widehat{\mathbf{Q}} \mathfrak{D}_T^{-1}) \leq 2(\log T_0)^{1/5}$ , with probability over  $\mathcal{H}$  at least  $1 - \pi_\gamma$ . Then, by the Gaussian tail bound, we can take  $\varpi_\delta^* = \mathfrak{C}_5 (\log T_0)^{0.9} / T_0$ ,  $\pi_\delta^* = \pi_\gamma$ , and  $\epsilon_\delta^* = T_0^{-1}$ .

**Step 3:** Consider condition (iii) in Theorem 1. It holds since the L1-L2 constraint and the specific choices of  $\varrho_\ell^{[i]}$ 's satisfy the conditions in Lemma 1 for  $T_0$  large enough, given the argument given in Step 2. In this case, we can set  $\pi_\Delta^* = \pi_\gamma$  and  $\epsilon_\Delta^* = T_0^{-1} + \epsilon_\gamma$ .

**Step 4:** Finally, consider condition (iv) in Theorem 1. Note that

$$\text{tr} \left[ (\Sigma^{-1/2} \widehat{\Sigma} \Sigma^{-1/2} - \mathbf{I}_d)^2 \right] \leq d s_{\min}(\Sigma)^{-2} \|\widehat{\Sigma} - \Sigma\|^2.$$

Since  $\lambda_{\min}(\Sigma) \geq \eta \lambda_{\min}(\widehat{\mathbf{Q}}) \geq \eta (\log T_0)^{-1/5} T_0^2 / 2$ , with probability over  $\mathcal{H}$  at least  $1 - \pi_\delta^*$ , it follows that  $\pi_\gamma^* = \pi_\gamma$ ,  $\epsilon_{\gamma,2}^* = \epsilon_{\Sigma,2}^*$  and  $\epsilon_{\gamma,1}^* = 2\sqrt{d} \epsilon_{\Sigma,1}^* (\log T_0)^{1/5} / (T_0^2 \eta)$ .



Given all results above, we finally set  $\pi = \pi_\gamma$  and  $\epsilon = 2\mathfrak{C}_\epsilon(\log T_0)^2 T_0^{-1/2} + 4\sqrt{d}\epsilon_{\Sigma,1}^*(\log T_0)^{1/5}/(T_0^2\eta) + \epsilon_{\Sigma,2}^* + 3T_0^{-1}$ . Then, the proof is complete.  $\square$

### S.4.2 Proof of Theorem 1

*Proof.* Let

$$\begin{aligned}\ell(\boldsymbol{\delta}) &= \boldsymbol{\delta}'\widehat{\mathbf{Q}}\boldsymbol{\delta} - 2\mathbf{G}'\boldsymbol{\delta} \quad \text{with } \mathbf{G}|\mathcal{H} \sim \mathbf{N}(\mathbf{0}, \boldsymbol{\Sigma}), \\ \ell^*(\boldsymbol{\delta}) &= \boldsymbol{\delta}'\widehat{\mathbf{Q}}\boldsymbol{\delta} - 2(\mathbf{G}^*)'\boldsymbol{\delta} \quad \text{with } \mathbf{G}^*|\text{Data} \sim \mathbf{N}(\mathbf{0}, \widehat{\boldsymbol{\Sigma}}).\end{aligned}$$

Accordingly, define

$$\begin{aligned}\bar{\zeta}_{\mathbf{r}}^* &= \sup \left\{ \mathbf{p}'_{\tau}\boldsymbol{\delta} : \boldsymbol{\delta} \in \Delta^*, \|\boldsymbol{\delta}\| \leq \varpi_{\delta}^*, \ell^*(\boldsymbol{\delta}) \leq 0 \right\}, \\ \bar{\zeta}_{\mathbf{r}}^{\text{int}} &= \sup \left\{ \mathbf{p}'_{\tau}\boldsymbol{\delta} : \boldsymbol{\delta} \in \Delta, \|\boldsymbol{\delta}\| \leq \varpi_{\delta}^*, \ell^*(\boldsymbol{\delta}) \leq 0 \right\}, \\ \bar{\zeta}_{\mathbf{r}} &= \sup \left\{ \mathbf{p}'_{\tau}\boldsymbol{\delta} : \boldsymbol{\delta} \in \Delta, \|\boldsymbol{\delta}\| \leq \varpi_{\delta}^*, \ell(\boldsymbol{\delta}) \leq 0 \right\}.\end{aligned}$$

The subscript  $\mathbf{r}$  indicates the quantity is a supremum over a further restricted region for  $\boldsymbol{\delta}$  (due to the constraint  $\|\boldsymbol{\delta}\| \leq \varpi_{\delta}^*$ ). For any  $\alpha_0 \in [0, 1]$ , let  $\bar{\zeta}_{\mathbf{r}}^*(\alpha_0)$  be the  $\alpha_0$ -quantile of  $\bar{\zeta}_{\mathbf{r}}^*$  conditional on the data and  $\bar{\zeta}_{\mathbf{r}}(\alpha_0)$  be the  $\alpha_0$ -quantile of  $\bar{\zeta}_{\mathbf{r}}$  conditional on  $\mathcal{H}$ . Similarly, define

$$\begin{aligned}\underline{\zeta}_{\mathbf{r}}^* &= \inf \left\{ \mathbf{p}'_{\tau}\boldsymbol{\delta} : \boldsymbol{\delta} \in \Delta^*, \|\boldsymbol{\delta}\| \leq \varpi_{\delta}^*, \ell^*(\boldsymbol{\delta}) \leq 0 \right\}, \\ \underline{\zeta}_{\mathbf{r}}^{\text{int}} &= \inf \left\{ \mathbf{p}'_{\tau}\boldsymbol{\delta} : \boldsymbol{\delta} \in \Delta, \|\boldsymbol{\delta}\| \leq \varpi_{\delta}^*, \ell^*(\boldsymbol{\delta}) \leq 0 \right\}, \\ \underline{\zeta}_{\mathbf{r}} &= \inf \left\{ \mathbf{p}'_{\tau}\boldsymbol{\delta} : \boldsymbol{\delta} \in \Delta, \|\boldsymbol{\delta}\| \leq \varpi_{\delta}^*, \ell(\boldsymbol{\delta}) \leq 0 \right\}.\end{aligned}$$

Let  $\underline{\zeta}_{\mathbf{r}}^*(\alpha_0)$  be the  $\alpha_0$ -quantile of  $\underline{\zeta}_{\mathbf{r}}^*$  conditional on the data and  $\underline{\zeta}_{\mathbf{r}}(\alpha_0)$  be the  $\alpha_0$ -quantile of  $\underline{\zeta}_{\mathbf{r}}$  conditional on  $\mathcal{H}$ .

Let  $\mathbb{P}_1 = \mathbf{N}(\mathbf{0}, \boldsymbol{\Sigma})$  and  $\mathbb{P}_2 = \mathbf{N}(\mathbf{0}, \widehat{\boldsymbol{\Sigma}})$ . By condition (iv), on an event with  $\mathbb{P}$ -probability at least  $1 - \pi_\gamma^*$ , with  $\mathbb{P}(\cdot|\mathcal{H})$ -probability at least  $1 - \epsilon_{\gamma,2}^*$ , the Kullback-Leibler divergence  $\mathbb{KL}(\mathbb{P}_1, \mathbb{P}_2) \leq 2(\epsilon_{\gamma,1}^*)^2$ , and by Pinsker's inequality, this implies that for any  $\kappa' \leq \kappa$ ,

$$|\mathbb{P}^*(\bar{\zeta}_{\mathbf{r}}^{\text{int}} \leq \kappa) - \mathbb{P}^*(\bar{\zeta}_{\mathbf{r}} \leq \kappa)| \leq \epsilon_{\gamma,1}^* \quad \text{and} \quad |\mathbb{P}^*(\underline{\zeta}_{\mathbf{r}}^{\text{int}} \geq \kappa') - \mathbb{P}^*(\underline{\zeta}_{\mathbf{r}} \geq \kappa')| \leq \epsilon_{\gamma,1}^*.$$

On the other hand, note that by condition (iii), on an event with  $\mathbb{P}$ -probability over  $\mathcal{H}$  at least  $1 - \pi_\Delta^*$ , with  $\mathbb{P}(\cdot|\mathcal{H})$ -probability at least  $1 - \epsilon_\Delta^*$ , the event  $\{\bar{\zeta}_{\mathbf{r}}^* \leq \kappa\}$  implies that

$$\begin{aligned}\sup \left\{ \mathbf{p}'_{\tau}\boldsymbol{\delta} : \boldsymbol{\delta} \in \Delta, \|\boldsymbol{\delta}\| \leq \varpi_{\delta}^*, \ell^*(\boldsymbol{\delta}) \leq 0 \right\} &\leq \kappa + \|\mathbf{p}'_{\tau}\|_* \sup_{\mathbf{a} \in \Delta \cap \mathcal{B}(0, \varpi_{\delta}^*)} \text{dist}(\mathbf{a}, \Delta^*) \\ &\leq \kappa + \|\mathbf{p}'_{\tau}\|_* \varpi_{\Delta}^* \leq \kappa + \varepsilon_{\Delta}(\tau),\end{aligned}$$

and  $\{\underline{\zeta}_{\mathbf{r}}^* \geq \kappa'\}$  implies that

$$\begin{aligned}\inf \left\{ \mathbf{p}'_{\tau}\boldsymbol{\delta} : \boldsymbol{\delta} \in \Delta, \|\boldsymbol{\delta}\| \leq \varpi_{\delta}^*, \ell^*(\boldsymbol{\delta}) \leq 0 \right\} &\geq \kappa' - \|\mathbf{p}'_{\tau}\|_* \sup_{\mathbf{a} \in \Delta \cap \mathcal{B}(0, \varpi_{\delta}^*)} \text{dist}(\mathbf{a}, \Delta^*) \\ &\geq \kappa' - \varepsilon_{\Delta}(\tau).\end{aligned}$$

Therefore,

$$\mathbb{P}^*(\bar{\zeta}_{\mathbf{r}}^* \leq \kappa) \leq \mathbb{P}^*(\zeta_{\mathbf{r}}^{\text{int}} \leq \kappa + \varepsilon_{\Delta}) \quad \text{and} \quad \mathbb{P}^*(\underline{\zeta}_{\mathbf{r}}^* \geq \kappa') \geq \mathbb{P}^*(\zeta_{\mathbf{r}}^{\text{int}} \geq \kappa' - \varepsilon_{\Delta}).$$

Then, by definitions of  $\bar{\zeta}_{\mathbf{r}}^*$  and  $\underline{\zeta}_{\mathbf{r}}^*$ , on an event with  $\mathbb{P}$ -probability over  $\mathcal{H}$  at least  $1 - \pi_{\gamma}^* - \pi_{\Delta}^*$ , with  $\mathbb{P}(\cdot|\mathcal{H})$ -probability at least  $1 - \epsilon_{\gamma,2}^* - \epsilon_{\Delta}^*$ , we have

$$\begin{aligned} 1 - \alpha_{\text{in}}/2 &\leq \mathbb{P}^*\left(\bar{\zeta}_{\mathbf{r}}^* \leq \bar{M}_{\text{in}}(\tau)\right) \leq \mathbb{P}^*\left(\bar{\zeta}_{\mathbf{r}} \leq \bar{M}_{\text{in}}(\tau) + \varepsilon_{\Delta}\right) + \epsilon_{\gamma,1}^* \quad \text{and} \\ 1 - \alpha_{\text{in}}/2 &\leq \mathbb{P}^*\left(\underline{\zeta}_{\mathbf{r}}^* \geq \underline{M}_{\text{in}}(\tau)\right) \leq \mathbb{P}^*\left(\underline{\zeta}_{\mathbf{r}} \geq \underline{M}_{\text{in}}(\tau) - \varepsilon_{\Delta}\right) + \epsilon_{\gamma,1}^*. \end{aligned}$$

Also, by condition (ii), we have with  $\mathbb{P}$ -probability over  $\mathcal{H}$  at least  $1 - \pi_{\delta}^*$ ,

$$\bar{\mathbf{c}}_{\mathbf{r}}(1 - \alpha_{\text{in}}/2 - \epsilon_{\gamma,1}^*) \geq \bar{\mathbf{c}}(1 - \alpha_{\text{in}}/2 - \epsilon_{\gamma,1}^* - \epsilon_{\delta}^*) \quad \text{and} \quad \underline{\mathbf{c}}_{\mathbf{r}}(\alpha_{\text{in}}/2 + \epsilon_{\gamma,1}^*) \leq \underline{\mathbf{c}}(\alpha_{\text{in}}/2 + \epsilon_{\gamma,1}^* + \epsilon_{\delta}^*).$$

Using condition (i) and all results above, we conclude that with  $\mathbb{P}$ -probability over  $\mathcal{H}$  at least  $1 - \pi_{\gamma}^* - \pi_{\gamma}^* - \pi_{\Delta}^* - \pi_{\delta}^*$ ,

$$\begin{aligned} &\mathbb{P}\left(\underline{M}_{\text{in}}(\tau) - \varepsilon_{\Delta} \leq \mathbf{p}'_{\tau}(\hat{\boldsymbol{\beta}} - \boldsymbol{\beta}_0) \leq \bar{M}_{\text{in}}(\tau) + \varepsilon_{\Delta} \mid \mathcal{H}\right) \\ &\geq \mathbb{P}\left(\underline{\mathbf{c}}_{\mathbf{r}}(\alpha_{\text{in}}/2 + \epsilon_{\gamma,1}^*) \leq \mathbf{p}'_{\tau}(\hat{\boldsymbol{\beta}} - \boldsymbol{\beta}_0) \leq \bar{\mathbf{c}}_{\mathbf{r}}(1 - \alpha_{\text{in}}/2 - \epsilon_{\gamma,1}^*) \mid \mathcal{H}\right) - \epsilon_{\gamma,2}^* - \epsilon_{\Delta}^* \\ &\geq \mathbb{P}\left(\underline{\mathbf{c}}(\alpha_{\text{in}}/2 + \epsilon_{\gamma,1}^* + \epsilon_{\delta}^*) \leq \mathbf{p}'_{\tau}(\hat{\boldsymbol{\beta}} - \boldsymbol{\beta}_0) \leq \bar{\mathbf{c}}(1 - \alpha_{\text{in}}/2 - \epsilon_{\gamma,1}^* - \epsilon_{\delta}^*) \mid \mathcal{H}\right) - \epsilon_{\gamma,2}^* - \epsilon_{\Delta}^* \\ &\geq 1 - \alpha_{\text{in}} - 2\epsilon_{\gamma,1}^* - 2\epsilon_{\delta}^* - \epsilon_{\gamma} - \epsilon_{\gamma,2}^* - \epsilon_{\Delta}^*. \end{aligned}$$

Finally, by condition (v), we immediately have  $\mathbb{P}(\underline{M}_{\text{out}}(\tau) \leq \text{OutErr}(\tau) \leq \bar{M}_{\text{out}}(\tau)) \geq 1 - \alpha_{\text{out}}$ . Then the proof is complete.  $\square$

### S.4.3 Verification of Condition (i) in Theorem 1

As explained in the main paper, by convexity of the constraint set  $\mathcal{W} \times \mathcal{R}$  and the optimality of  $\hat{\boldsymbol{\beta}}$ ,

$$\inf_{\boldsymbol{\delta} \in \mathcal{M}_{\hat{\boldsymbol{\gamma}}-\boldsymbol{\gamma}}} \mathbf{p}'_{\tau} \boldsymbol{\delta} \leq \mathbf{p}'_{\tau}(\hat{\boldsymbol{\beta}} - \boldsymbol{\beta}_0) \leq \sup_{\boldsymbol{\delta} \in \mathcal{M}_{\hat{\boldsymbol{\gamma}}-\boldsymbol{\gamma}}} \mathbf{p}'_{\tau} \boldsymbol{\delta},$$

where  $\mathcal{M}_{\hat{\boldsymbol{\gamma}}-\boldsymbol{\gamma}} = \{\boldsymbol{\delta} \in \Delta : \boldsymbol{\delta}' \hat{\mathbf{Q}} \boldsymbol{\delta} - 2(\hat{\boldsymbol{\gamma}} - \boldsymbol{\gamma})' \boldsymbol{\delta}\}$ . Thus, condition (i) in Theorem 1 indeed requires that  $\hat{\boldsymbol{\gamma}} - \boldsymbol{\gamma}$  can be approximated by a Gaussian vector  $\mathbf{G}$ . Corollary 1 in the paper provided a verification of this condition in the special case of cointegrated data. In this section, we provide a more general way to verify condition (i) by imposing a conditional independence assumption on the pseudo-true residuals. The extension that allows for weakly dependent errors can be established using the idea of Theorem A in Cattaneo et al. (2021). For simplicity, we assume that only  $T_0$  pre-treatment periods are used to obtain the weights. Also, we write  $\mathbf{U}^{[i]} = (u_{it,1}, \dots, u_{it,M})'$ , which is the vector of pseudo-true residuals corresponding to the treated unit  $i$ .

**Lemma S.1.** *Assume  $\mathcal{W}$  and  $\mathcal{R}$  are convex,  $\hat{\boldsymbol{\beta}}$  in Equation (6.1) and  $\boldsymbol{\beta}_0$  in Equation (6.3) exist, and  $\mathcal{H} = \sigma(\mathbf{B}, \mathbf{C}, \mathbf{p}_{\tau})$ . In addition, for some finite nonnegative constants, the following conditions hold:*

- (i)  $\mathbf{u}_t = (u_{1t,1}, \dots, u_{1t,M}, \dots, u_{J_t,1}, \dots, u_{J_t,M})$  is independent over  $t$  conditional on  $\mathcal{H}$ ;

(ii)  $\mathbb{P}(\sum_{t=1}^{T_0} \mathbb{E}[\|\sum_{j=1}^{J_1} \sum_{l=1}^M \tilde{\mathbf{z}}_{t,l}^{[j]}(u_{jt,l} - \mathbb{E}[u_{jt,l}|\mathcal{H}])\|^3|\mathcal{H}] \geq \epsilon_\gamma(84(d^{1/4} + 16))^{-1}) \geq 1 - \pi_\gamma$  where  $\tilde{\mathbf{z}}_{t,l}^{[j]}$  is the  $((j-1)T_0M + (l-1)T_0 + t)$ -th column of  $\mathbf{\Sigma}^{-1/2}\mathbf{Z}'$ .

Then, with  $\mathbb{P}$ -probability over  $\mathcal{H}$  at least  $1 - \pi_\gamma$ ,

$$\mathbb{P}\left(\mathbf{c}_L(\alpha_0) \leq \mathbf{p}'_\tau(\hat{\boldsymbol{\beta}} - \boldsymbol{\beta}_0) \leq \bar{\mathbf{c}}(1 - \alpha_0)|\mathcal{H}\right) \geq 1 - 2\alpha_0 - \epsilon_\gamma.$$

*Proof.* Define  $\mathcal{M}_\xi = \{\boldsymbol{\delta} \in \Delta : \boldsymbol{\delta}'\hat{\mathbf{Q}}\boldsymbol{\delta} - 2\xi'\boldsymbol{\delta}\}$ . Fix  $\hat{\mathbf{Q}}$  and  $\mathbf{p}_\tau$ . By Lemma 2 of Cattaneo et al. (2021), for any  $\kappa$ ,  $\mathcal{A}_\kappa := \{\boldsymbol{\xi} \in \mathbb{R}^d : \sup_{\boldsymbol{\delta} \in \mathcal{M}_\xi} \mathbf{p}'_\tau\boldsymbol{\delta} \leq \kappa\}$  and  $\mathcal{A}'_\kappa = \{\boldsymbol{\xi} \in \mathbb{R}^d : \inf_{\boldsymbol{\delta} \in \mathcal{M}_\xi} \mathbf{p}'_\tau\boldsymbol{\delta} \geq \kappa\}$  are convex. By Berry-Esseen Theorem for convex sets Raič (2019),

$$|\mathbb{P}(\hat{\boldsymbol{\gamma}} - \boldsymbol{\gamma} \in \mathcal{A}_\kappa|\mathcal{H}) - \mathbb{P}(\mathbf{G} \in \mathcal{A}_\kappa|\mathcal{H})| \leq 42(d^{1/4} + 16) \sum_{t=1}^{T_0} \mathbb{E}\left[\left\|\sum_{j=1}^{J_1} \sum_{l=1}^M \tilde{\mathbf{z}}_{t,l}^{[j]} \tilde{u}_{jt,l}\right\|^3|\mathcal{H}\right],$$

where  $\tilde{u}_{jt,l} = u_{jt,l} - \mathbb{E}[u_{jt,l}|\mathcal{H}]$ . By condition (ii), with  $\mathbb{P}$ -probability over  $\mathcal{H}$  at least  $1 - \pi_\gamma$ ,

$$|\mathbb{P}(\hat{\boldsymbol{\gamma}} - \boldsymbol{\gamma} \in \mathcal{A}_\kappa|\mathcal{H}) - \mathbb{P}(\mathbf{G} \in \mathcal{A}_\kappa|\mathcal{H})| \leq \epsilon_\gamma/2.$$

Then, for any  $\kappa$ , with  $\mathbb{P}$ -probability over  $\mathcal{H}$  at least  $1 - \pi_\gamma$ ,

$$\mathbb{P}(\mathbf{p}'_\tau(\hat{\boldsymbol{\beta}} - \boldsymbol{\beta}_0) \leq \kappa|\mathcal{H}) \geq \mathbb{P}(\hat{\boldsymbol{\gamma}} - \boldsymbol{\gamma} \in \mathcal{A}_\kappa|\mathcal{H}) \geq \mathbb{P}(\mathbf{G} \in \mathcal{A}_\kappa|\mathcal{H}) - \epsilon_\gamma/2.$$

Similarly, we can show for any  $\kappa$ ,

$$\mathbb{P}(\mathbf{p}'_\tau(\hat{\boldsymbol{\beta}} - \boldsymbol{\beta}_0) \geq \kappa|\mathcal{H}) \geq \mathbb{P}(\hat{\boldsymbol{\gamma}} - \boldsymbol{\gamma} \in \mathcal{A}'_\kappa|\mathcal{H}) \geq \mathbb{P}(\mathbf{G} \in \mathcal{A}'_\kappa|\mathcal{H}) - \epsilon_\gamma/2.$$

Therefore, with  $\mathbb{P}$ -probability over  $\mathcal{H}$  at least  $1 - \pi_\gamma$ ,

$$\mathbb{P}\left(\mathbf{c}_L(\alpha_0) \leq \mathbf{p}'_\tau(\hat{\boldsymbol{\beta}} - \boldsymbol{\beta}_0) \leq \mathbf{c}_U(1 - \alpha_0)|\mathcal{H}\right) \geq 1 - \alpha_0 - \epsilon_\gamma.$$

Then the proof is complete.  $\square$

#### S.4.4 Proof of Lemma 1

*Proof.* In this proof, the constant  $\mathfrak{C} > 0$  is a generic constant that is independent of  $T_0$  and may be different in different uses.

Note that  $\mathbf{m}_=(\boldsymbol{\beta}_0) = \mathbf{0}$  and  $\mathbf{m}_\leq(\boldsymbol{\beta}_0) \leq \mathbf{0}$ . For  $\mathbf{c} := \max_{1 \leq \ell \leq d_\leq} \sup_{\boldsymbol{\beta} \in \mathcal{B}(\boldsymbol{\beta}_0, \varpi_\delta^*)} \|\frac{\partial}{\partial \boldsymbol{\beta}} m_{\leq, \ell}(\boldsymbol{\beta})\|$ , we have  $\max_{1 \leq \ell \leq d_\leq} |m_{\leq, \ell}(\hat{\boldsymbol{\beta}}) - m_{\leq, \ell}(\boldsymbol{\beta}_0)| \leq \mathbf{c}\varpi_\delta^*$  with  $\mathbb{P}(\cdot|\mathcal{H})$ -probability at least  $1 - \epsilon_\Delta^*$ , on an event with  $\mathbb{P}$ -probability over  $\mathcal{H}$  at least  $1 - \pi_\Delta^*$ . Note that if the  $\ell$ -th inequality constraint is binding, i.e.,  $m_{\leq, \ell}(\boldsymbol{\beta}_0) = 0$ , then  $m_{\leq, \ell}(\hat{\boldsymbol{\beta}}) = \frac{\partial}{\partial \boldsymbol{\beta}} m_{\leq, \ell}(\tilde{\boldsymbol{\beta}})(\hat{\boldsymbol{\beta}} - \boldsymbol{\beta}_0)$  for some  $\tilde{\boldsymbol{\beta}}$  between  $\boldsymbol{\beta}_0$  and  $\hat{\boldsymbol{\beta}}$ . By the condition imposed on the tuning parameters  $\varrho_\ell$ 's, on an event with  $\mathbb{P}$ -probability over  $\mathcal{H}$  at least  $1 - \pi_\Delta^*$ , with  $\mathbb{P}(\cdot|\mathcal{H})$ -probability at least  $1 - \epsilon_\Delta^*$ ,  $\mathcal{A}$  coincides with the set of indices for the binding inequality constraints. Then, for  $\varepsilon \leq \varpi_\delta^*$ ,

$$\Delta^* \cap \mathcal{B}(0, \varepsilon) = \left\{ \boldsymbol{\beta} - \hat{\boldsymbol{\beta}} \in \mathcal{B}(0, \varepsilon) : \mathbf{m}_=(\boldsymbol{\beta}) = \mathbf{0}, m_{\leq, \ell}(\boldsymbol{\beta}) \leq m_{\leq, \ell}(\hat{\boldsymbol{\beta}}) \text{ for } \ell \in \mathcal{A} \right\}.$$

Without loss of generality, we assume  $\mathbf{m}_\leq(\boldsymbol{\beta}_0) = \mathbf{0}$  hereafter. Otherwise, the non-binding constraints can be dropped, and the proof can proceed the same way as described below.

Define  $\Gamma_=(\boldsymbol{\beta}) = \frac{\partial}{\partial \boldsymbol{\beta}'} \mathbf{m}_=(\boldsymbol{\beta})$  and  $\Gamma_{\leq}(\boldsymbol{\beta}) = \frac{\partial}{\partial \boldsymbol{\beta}'} \mathbf{m}_{\leq}(\boldsymbol{\beta})$ . Let

$$\Gamma(\boldsymbol{\beta}) = \left( \Gamma'_=(\boldsymbol{\beta}), \Gamma'_{\leq}(\boldsymbol{\beta}), \Gamma'_c(\boldsymbol{\beta}_0) \right)', \quad \Gamma^0 = \Gamma(\boldsymbol{\beta}_0), \quad \Gamma^* = \Gamma(\widehat{\boldsymbol{\beta}}),$$

where  $\Gamma_c(\boldsymbol{\beta}_0)$  is chosen such that  $\Gamma(\boldsymbol{\beta}_0)$  is non-degenerate. By conditions (i) and (ii) imposed in the lemma,  $\|\Gamma^0 - \Gamma^*\| \leq \mathfrak{C}\|\widehat{\boldsymbol{\beta}} - \boldsymbol{\beta}_0\|$  with  $\mathbb{P}(\cdot|\mathcal{H})$ -probability at least  $1 - \epsilon_{\Delta}^*$ , on an event with  $\mathbb{P}$ -probability at least  $1 - \pi_{\Delta}^*$ .

Let

$$\mathbf{m}^+(\cdot) = \left( \mathbf{m}'_=(\cdot), \mathbf{m}'_{\leq}(\cdot), (\cdot - \boldsymbol{\beta}_0)' \times \Gamma_c(\boldsymbol{\beta}_0)' \right)'.$$

Then,  $\mathbf{m}^+(\boldsymbol{\beta}_0) = \mathbf{0}$ . For each  $\boldsymbol{\beta}$  in the neighborhood around  $\boldsymbol{\beta}_0$  such that  $\boldsymbol{\beta} - \boldsymbol{\beta}_0 \in \Delta \cap \mathcal{B}(0, \varepsilon)$ , define

$$\boldsymbol{\lambda}^0 = (\Gamma^0)^{-1} \left( \mathbf{m}^+(\boldsymbol{\beta}) - \mathbf{m}^+(\boldsymbol{\beta}_0) \right).$$

Thus,  $\Gamma^0 \boldsymbol{\lambda}^0 = \mathbf{0}$ ,  $\Gamma^0_{\leq} \boldsymbol{\lambda}^0 \leq \mathbf{0}$ . Note that by Taylor's expansion,

$$\|\boldsymbol{\lambda}^0 - (\Gamma^0)^{-1} \Gamma^0 (\boldsymbol{\beta} - \boldsymbol{\beta}_0)\| \leq \mathfrak{C}\|\boldsymbol{\beta} - \boldsymbol{\beta}_0\|^2,$$

implying that  $\|\boldsymbol{\lambda}^0 - (\boldsymbol{\beta} - \boldsymbol{\beta}_0)\| \leq \mathfrak{C}(\varpi_{\delta}^*)^2$  with  $\mathbb{P}(\cdot|\mathcal{H})$ -probability at least  $1 - \epsilon_{\Delta}^*$ , on an event with  $\mathbb{P}$ -probability at least  $1 - \pi_{\Delta}^*$ .

Next, define  $\tilde{\mathbf{m}}(\cdot) = \mathbf{m}^+(\widehat{\boldsymbol{\beta}} + \cdot) - \mathbf{m}^+(\widehat{\boldsymbol{\beta}})$  and  $\tilde{\boldsymbol{\beta}} = \boldsymbol{\phi}^* + \widehat{\boldsymbol{\beta}}$  for  $\boldsymbol{\phi}^*$  defined below:

$$\boldsymbol{\phi}^* := \tilde{\mathbf{m}}^{-1} \left( \Gamma^* (\boldsymbol{\lambda}^0 - (\Gamma^*)^{-1} (\Gamma^* - \Gamma^0) \boldsymbol{\lambda}^0) \right).$$

By Taylor's expansion,

$$\begin{aligned} \boldsymbol{\phi}^* &= \tilde{\mathbf{m}}^{-1}(\mathbf{0}) + \left[ \frac{\partial}{\partial \boldsymbol{\phi}'} \tilde{\mathbf{m}}(\mathbf{0}) \right]^{-1} \Gamma^* \left( \boldsymbol{\lambda}^0 - (\Gamma^*)^{-1} (\Gamma^* - \Gamma^0) \boldsymbol{\lambda}^0 \right) + \mathfrak{R}\boldsymbol{\epsilon} \\ &= \boldsymbol{\lambda}^0 - (\Gamma^*)^{-1} (\Gamma^* - \Gamma^0) \boldsymbol{\lambda}^0 + \mathfrak{R}\boldsymbol{\epsilon}, \end{aligned}$$

where  $\|(\Gamma^*)^{-1} (\Gamma^* - \Gamma^0) \boldsymbol{\lambda}^0 + \mathfrak{R}\boldsymbol{\epsilon}\| \leq \mathfrak{C}\|\boldsymbol{\lambda}^0\|^2$  with  $\mathbb{P}(\cdot|\mathcal{H})$ -probability at least  $1 - \epsilon_{\Delta}^*$ , on an event with  $\mathbb{P}$ -probability over  $\mathcal{H}$  at least  $1 - \pi_{\Delta}^*$ . That is, we actually find  $\tilde{\boldsymbol{\beta}}$  such that  $\|(\tilde{\boldsymbol{\beta}} - \widehat{\boldsymbol{\beta}}) - \boldsymbol{\lambda}^0\| \leq \mathfrak{C}(\varpi_{\delta}^*)^2$ . Note that

$$\mathbf{m}^+(\widehat{\boldsymbol{\beta}} + \boldsymbol{\phi}^*) - \mathbf{m}^+(\widehat{\boldsymbol{\beta}}) = \tilde{\mathbf{m}}(\boldsymbol{\phi}^*) = \tilde{\mathbf{m}} \left( \tilde{\mathbf{m}}^{-1} \left( \Gamma^* (\boldsymbol{\lambda}^0 - (\Gamma^*)^{-1} (\Gamma^* - \Gamma^0) \boldsymbol{\lambda}^0) \right) \right).$$

Thus,  $\mathbf{m}_=(\tilde{\boldsymbol{\beta}}) = \mathbf{0}$  and  $\mathbf{m}_{\leq}(\tilde{\boldsymbol{\beta}}) \leq \mathbf{m}_{\leq}(\widehat{\boldsymbol{\beta}})$ .

In the above, we make use of the fact that  $\Gamma^*$  is non-degenerate, i.e., its smallest eigenvalue is bounded away from zero. Note that by assumptions on the constraints, it is feasible to construct  $\Gamma_c$  such that  $\Gamma^0$  is non-degenerate (with high probability over  $\mathcal{H}$ ). Then, by Weyl's inequality,

$$s_{\min}(\Gamma^* (\Gamma^*)') \geq s_{\min}(\Gamma^0 (\Gamma^0)') - \mathfrak{C}\|\widehat{\boldsymbol{\beta}} - \boldsymbol{\beta}_0\|,$$

implying  $s_{\min}(\Gamma^*) \geq s_{\min}(\Gamma^0) - \mathfrak{C}\|\widehat{\boldsymbol{\beta}} - \boldsymbol{\beta}_0\| > 0$  with  $\mathbb{P}(\cdot|\mathcal{H})$ -probability at least  $1 - \epsilon_{\Delta}^*$ , on an event with  $\mathbb{P}$ -probability at least  $1 - \pi_{\Delta}^*$ , where  $s_{\min}(\cdot)$  here denotes the smallest eigenvalue of the symmetric matrix inside. Then, the proof is complete.  $\square$

## S.5 Second Order Cone Programming

In this section, we first define three types of convex optimization problems that we will be relying on (for background knowledge and technical details, see [Boyd and Vandenberghe \(2004\)](#)). Second, we illustrate the link between these three families of convex problems. Third, we show that the optimization problems underlying the prediction/estimation and uncertainty quantification problems for SC presented in Section 6 of the main text are quadratically constrained quadratic program (QCQP) and quadratically constrained linear problem (QCLP), respectively, and show how to represent them as second-order cone program (SOCP). Finally, we provide two examples by showing how to write the L1-L2-type and Lasso-type constraints in conic form. These approaches are implemented in our companion general-purpose software ([Cattaneo, Feng, Palomba and Titiumnik, 2024](#)), where we show that they lead to remarkable speed and scalability improvements.

### S.5.1 Families of convex optimization problems

**QCQPs and QCLPs.** A quadratically constrained quadratic program is an optimization problem of with the following form

$$\begin{aligned} \min_{\mathbf{x}} \quad & \mathbf{x}'\mathbf{P}_0\mathbf{x} + \mathbf{q}'_0\mathbf{x} + w & (\text{S.5.1}) \\ \text{subject to} \quad & \mathbf{x}'\mathbf{P}_j\mathbf{x} + \mathbf{q}'_j\mathbf{x} + r_j \leq 0, \quad j = 1, \dots, m, & (\text{Quadratic inequality constraint}) \\ & \mathbf{F}\mathbf{x} = \mathbf{g}, & (\text{Linear equality constraint}) \end{aligned}$$

where  $\mathbf{P}_0, \mathbf{P}_1, \dots, \mathbf{P}_m \in \mathcal{M}_{n \times n}(\mathbb{R})$ ,  $\mathbf{q}_0, \mathbf{q}_1, \dots, \mathbf{q}_m \in \mathbb{R}^n$ ,  $\mathbf{x} \in \mathbb{R}^n$ ,  $\mathbf{F} \in \mathcal{M}_{m \times n}(\mathbb{R})$ ,  $\mathbf{g} \in \mathbb{R}^m$ , and  $r_0, r_1, \dots, r_m, w \in \mathbb{R}$ . If all the matrices  $\mathbf{P}_0, \mathbf{P}_1, \dots, \mathbf{P}_m$  are positive semi-definite the QCQP is convex. Moreover, if  $\mathbf{P}_0 = \mathbf{0}$  the QCQP becomes a QCLP. For this reason, in what follows we will restrict our attention to QCQPs as they naturally embed QCLPs.

**SOCPs.** To define a SOCP, it is necessary to first give the definition of a second-order cone and then introduce the notion of associated *generalized inequality*.

**Second-order cone definition.** A set  $\mathcal{C}$  is called a *cone* if for every  $\mathbf{x} \in \mathcal{C}$  and  $\alpha \geq 0$  we have  $\alpha\mathbf{x} \in \mathcal{C}$ . A set  $\mathcal{C}$  is a *convex cone* if it is convex and a cone, i.e. if  $\forall \mathbf{x}_1, \mathbf{x}_2 \in \mathcal{C}$ , and  $\forall \alpha_1, \alpha_2 \geq 0$ , we have

$$\alpha_1\mathbf{x}_1 + \alpha_2\mathbf{x}_2 \in \mathcal{C}.$$

Now, consider any norm  $\|\cdot\|$  defined on the Euclidean space  $\mathbb{R}^n$ . The *norm cone* associated with the norm  $\|\cdot\|$  is defined to be the set

$$\mathcal{C} = \{(\mathbf{x}, t) \in \mathbb{R}^{n+1} : \|\mathbf{x}\| \leq t\}$$

and it is a convex cone by the standard properties of the norms. A *second-order cone* is the associated norm cone for the Euclidean norm and it is typically defined as

$$\mathcal{C} = \{(\mathbf{x}, t) \in \mathbb{R}^{n+1} : \|\mathbf{x}\|_2 \leq t\} = \left\{ \begin{bmatrix} \mathbf{x} \\ t \end{bmatrix} : \begin{bmatrix} \mathbf{x} \\ t \end{bmatrix}' \begin{bmatrix} \mathbf{I} & 0 \\ 0 & -1 \end{bmatrix} \begin{bmatrix} \mathbf{x} \\ t \end{bmatrix} \leq 0, t \geq 0 \right\}$$

**Generalized inequality.** A cone  $\mathcal{C}$  is *solid* if it has non-empty interior and it is **pointed** if  $\mathbf{x} \in \mathcal{C}$ ,  $-\mathbf{x} \in \mathcal{C}$  implies that  $\mathbf{x} = \mathbf{0}$ . We say that a cone  $\mathcal{C}$  is *proper* if it is convex, closed, solid, and pointed. Proper cones in the Euclidean space  $\mathbb{R}^n$  are useful because they induce a partial ordering that enjoys almost all the properties of the basic one in  $\mathbb{R}$ . Therefore, given a cone  $\mathcal{C} \subseteq \mathbb{R}^n$ , we can

define the generalized inequality  $\preceq_{\mathcal{C}}$  for any two vectors  $\mathbf{x}, \mathbf{y} \in \mathbb{R}^n$

$$\mathbf{x} \preceq_{\mathcal{C}} \mathbf{y} \iff \mathbf{y} - \mathbf{x} \in \mathcal{C}.$$

From this definition we can see that quadratic constraints such as  $\|\mathbf{x}\|_2 \leq h$  can be re-written as second-order cone constraints of the form  $\mathbf{x} \preceq_{\mathcal{C}} h$  for some second-order cone  $\mathcal{C}$ . Note that if  $\mathcal{C} = \mathbb{R}_+^m$  then if  $m = 1$ ,  $\preceq_{\mathcal{C}}$  is the standard inequality  $\leq$  in  $\mathbb{R}$ , whereas if  $m > 1$ ,  $\preceq_{\mathcal{C}}$  is the component-wise inequality in  $\mathbb{R}^m$ .

Second-order cone program. Let  $\mathcal{K}$  be a cone such that  $\mathcal{K} = \mathbb{R}_+^m \times \mathcal{K}_1 \times \mathcal{K}_2 \times \cdots \times \mathcal{K}_L$  where  $\mathcal{K}_l := \{(k_0, \mathbf{k}_1) \in \mathbb{R} \times \mathbb{R}^l : \|\mathbf{k}_1\|_2 \leq k_0\}, l = 1, \dots, L$ . Let  $\preceq_{\mathcal{K}}$  be the *generalized inequality* associated with the cone  $\mathcal{K}$ . An optimization problem is called *second-order cone program* if it has the following form

$$\begin{aligned} \min_{\mathbf{x}} \quad & \mathbf{c}'\mathbf{x}, & (\text{S.5.2}) \\ \text{subject to} \quad & \mathbf{G}\mathbf{x} \preceq_{\mathcal{K}} \mathbf{h}, & (\text{Second-order cone constraint}) \\ & \mathbf{A}\mathbf{x} = \mathbf{b}. & (\text{Linear equality constraint}) \end{aligned}$$

### S.5.2 Link between QCQP and SOCPs.

Any QCQP can be converted to a SOCP (Boyd and Vandenberghe, 2004). In other words, we can always rewrite an optimization problem such as (S.5.1) in the form of (S.5.2). First, we present the general result and then we explain all the necessary steps to reformulate QCQPs as SOCPs. Without loss of generality, assume that  $w = 0$  in (S.5.1) and, to ease notation, let  $m = 1$  so that there is only a single quadratic inequality constraint. Moreover, given any positive semi-definite matrix  $\mathbf{P}$ , let  $\mathbf{P}^{1/2}$  be the square root of  $\mathbf{P}$ , that is the unique symmetric positive semi-definite matrix  $\mathbf{R}$  such that  $\mathbf{R}\mathbf{R} = \mathbf{R}'\mathbf{R} = \mathbf{P}$ . Then for any QCQP the following two formulations are equivalent

<u>QCQP</u>	<u>SOCP</u>
$\min_{\mathbf{x}} \quad \mathbf{x}'\mathbf{P}_0\mathbf{x} + \mathbf{q}'_0\mathbf{x}$	$\min_{\mathbf{x}, v, t, s} \quad v + \mathbf{q}'_0\mathbf{x}$
subject to $\mathbf{F}\mathbf{x} = \mathbf{g},$	subject to $\mathbf{F}\mathbf{x} = \mathbf{g},$
$\mathbf{x}'\mathbf{P}_1\mathbf{x} + \mathbf{q}'_1\mathbf{x} + r_1 \leq 0.$	$t + \mathbf{q}'_1\mathbf{x} + r_1 \preceq_{\mathbb{R}_+} 0,$
	$\mathbf{P}_0^{1/2}\mathbf{x} \preceq_{K_{1+n}} v,$
	$\mathbf{P}_1^{1/2}\mathbf{x} \preceq_{K_{1+n}} s.$

We can see that the logic beneath the conversion of a QCQP into a SOCP is to “linearize” all the non-linear terms appearing either in the objective function or in the inequality constraints. The “linearization” step does come at a cost, as it requires the introduction of a slack variable every time we rely on it. Indeed, above we linearized the objective function and the quadratic inequality constraint by introducing two auxiliary slack variables.

More formally, let  $\mathbf{x}'\mathbf{P}\mathbf{x}$  be a symmetric positive semi-definite quadratic form and consider the constraint  $\mathbf{x}'\mathbf{P}\mathbf{x} \leq y$ . Then

- (i) Since  $\mathbf{P}$  is symmetric positive semi-definite the epigraph  $\mathbf{x}'\mathbf{P}\mathbf{x} \leq y$  is a convex set and  $\mathbf{P}^{1/2}$  is well-defined.

(ii) Write the inequality constraint as a constraint involving the Euclidean norm  $\|\cdot\|_2$

$$y \geq \mathbf{x}'\mathbf{P}\mathbf{x} = \mathbf{x}'\mathbf{P}^{1/2}\mathbf{P}^{1/2}\mathbf{x} = \|\mathbf{P}^{1/2}\mathbf{x}\|_2^2.$$

(iii) Note that

$$\|\mathbf{P}^{1/2}\mathbf{x}\|_2^2 \leq y \iff \left\| \begin{bmatrix} 1-y \\ 2\mathbf{P}^{1/2}\mathbf{x} \end{bmatrix} \right\|_2 \leq 1+y, \quad (\text{S.5.3})$$

which can be verified by squaring the two sides of the last inequality and expand the norm.

(iv) More is true, as the right-most inequality in (S.5.3) defines the following second-order cone for given  $\mathbf{P}^{1/2}$

$$\mathcal{C} = \left\{ \left( 1-y, 2\mathbf{P}^{1/2}\mathbf{x}, 1+y \right) : \left\| \begin{bmatrix} 1-y \\ 2\mathbf{P}^{1/2}\mathbf{x} \end{bmatrix} \right\|_2 \leq 1+y \right\},$$

which in turn induces the generalized inequality  $\mathbf{P}^{1/2}\mathbf{x} \preceq_{\mathcal{C}} y$ .

### S.5.3 Specific Synthetic Control Problems as SOCPs

We illustrate the approach described above for the L1-L2 constraint and the Lasso constraint. Note that simplex, ridge, or least squares are particular cases of L1-L2. Throughout this section we assume that  $T_i \equiv T_0$  for all  $i \in \mathcal{E}$ .

**L1-L2-type  $\mathcal{W}$ .** Consider first the prediction/estimation SC optimization problem, which relies on the following program:

$$\begin{aligned} \min_{\mathbf{w}, \mathbf{r}} \quad & (\mathbf{A} - \mathbf{B}\mathbf{w} - \mathbf{C}\mathbf{r})' \mathbf{V} (\mathbf{A} - \mathbf{B}\mathbf{w} - \mathbf{C}\mathbf{r}) & (\text{S.5.4}) \\ \text{subject to} \quad & \|\mathbf{w}^{[i]}\|_1 = Q_1^{[i]}, \quad i = 1, \dots, J_1, & (\text{L1 equality constraints}) \\ & \|\mathbf{w}^{[i]}\|_2 \leq Q_2^{[i]}, \quad i = 1, \dots, J_1, & (\text{L2 inequality constraints}) \\ & \mathbf{w} \geq \mathbf{0}, & (\text{non-negativity constraint}) \end{aligned}$$

where, as always,  $\geq$  is understood as a component-wise inequality for vectors ( $\mathbf{w} \in \mathbb{R}^{J_0 \cdot J_1}$ ). First, notice that the non-convex constraints  $\|\mathbf{w}^{[i]}\|_1 = Q_1^{[i]}, i = 1, \dots, J_1$  can be replaced with the convex constraints  $\mathbf{1}'\mathbf{w}^{[i]} = Q_1^{[i]}, i = 1, \dots, J_1$  because of the non-negativity constraint on the elements of  $\mathbf{w}$ . Then, we can cast (S.5.4) as a SOCP as follows

$$\begin{aligned} \min_{\mathbf{w}, \mathbf{r}, v, \{s_i\}_{i=1}^{J_1}} \quad & v \\ \text{subject to} \quad & \mathbf{1}'\mathbf{w}^{[i]} = Q_1^{[i]}, & (\text{L1 equality constraints}) \\ & -\mathbf{w} \preceq_{\mathcal{C}_1} \mathbf{0}, & (\text{cone in } \mathbb{R}^{J_0 \cdot J_1}) \\ & \begin{bmatrix} 1-v \\ 2\mathbf{V}^{1/2}(\mathbf{A} - \mathbf{B}\mathbf{w} - \mathbf{C}\mathbf{r}) \end{bmatrix} \preceq_{\mathcal{C}_2} \mathbf{1} + v, & (\text{cone in } \mathbb{R}^{2+\bar{T} \cdot M}) \\ & s_i \preceq_{\mathcal{C}_3} Q_1^{[i]}, \quad i = 1, \dots, J_1 & (J_1 \text{ cones in } \mathbb{R}) \\ & \begin{bmatrix} 1-s_i \\ 2\mathbf{w}^{[i]} \end{bmatrix} \preceq_{\mathcal{C}_4} \mathbf{1} + s_i, \quad i = 1, \dots, J_1, & (J_1 \text{ cones in } \mathbb{R}^{2+J_0}) \end{aligned}$$

where  $\mathcal{K} = \mathcal{C}_1 \times \mathcal{C}_2 \times \mathcal{C}_3^{J_1} \times \mathcal{C}_4^{J_1} = \mathbb{R}_+^{J_0 \cdot J_1} \times \mathcal{K}_{\tilde{T} \cdot M+1} \times \mathbb{R}_+^{J_1} \times \mathcal{K}_{J_0+1}^{J_1}$  is the conic constraint for this program.

For uncertainty quantification, we need to solve the optimization problem underlying (6.5). We discuss the lower bound only. Recalling that  $\boldsymbol{\beta} = (\mathbf{w}', \mathbf{r}')'$ , we have

$$\begin{aligned} \inf_{\boldsymbol{\beta} = (\mathbf{w}', \mathbf{r}')'} \quad & \mathbf{p}'_r (\boldsymbol{\beta} - \widehat{\boldsymbol{\beta}}) & (\text{S.5.5}) \\ \text{subject to} \quad & \|\mathbf{w}^{[i]}\|_1 = Q_1^{[i]}, \quad i = 1, \dots, J_1, & (\text{L1 equality constraints}) \\ & \|\mathbf{w}^{[i]}\|_2 \leq Q_2^{[i]} + \varrho_1^{[i]}, \quad i = 1, \dots, J_1, & (\text{L2 inequality constraints}) \\ & \mathbf{w} \geq -\boldsymbol{\varrho}_2, & (\text{non-negativity constraint}) \\ & (\boldsymbol{\beta} - \widehat{\boldsymbol{\beta}})' \widehat{\mathbf{Q}} (\boldsymbol{\beta} - \widehat{\boldsymbol{\beta}}) - 2(\mathbf{G}^*)' (\boldsymbol{\beta} - \widehat{\boldsymbol{\beta}}) \leq 0, & (\text{constrained least squares}) \end{aligned}$$

where the scalars  $\varrho_1^{[i]}, i = 1, \dots, J_1$  and the vector  $\boldsymbol{\varrho}_2$  are regularization parameters used to relax  $\Delta$  (to  $\Delta^*$  as discussed in Section 6.1).

We can cast the SC optimization problem in (S.5.5) in conic form as follows:

$$\begin{aligned} \min_{\mathbf{w}, \mathbf{r}, \{s_i\}_{i=1}^{J_1}, t} \quad & \mathbf{p}'_r \boldsymbol{\beta} \\ \text{subject to} \quad & \mathbf{1}' \mathbf{w}^{[i]} = Q_1^{[i]}, \quad i = 1, \dots, J_1, & (\text{L1 equality constraints}) \\ & t + \mathbf{a}' \boldsymbol{\beta} + f \preceq_{\mathcal{C}_1} 0, & (\text{cone in } \mathbb{R}) \\ & -\mathbf{w} \preceq_{\mathcal{C}_2} \boldsymbol{\varrho}_2, & (\text{cone in } \mathbb{R}^{J_0 \cdot J_1}) \\ & s_i \preceq_{\mathcal{C}_3} Q_1^{[i]} + \varrho_1^{[i]}, \quad i = 1, \dots, J_1, & (J_1 \text{ cones in } \mathbb{R}) \\ & \begin{bmatrix} 1 - s_i \\ 2\mathbf{w}^{[i]} \end{bmatrix} \preceq_{\mathcal{C}_4} \mathbf{1} + s_i, \quad i = 1, \dots, J_1, & (J_1 \text{ cones in } \mathbb{R}^{2+J_0}) \\ & \begin{bmatrix} 1 - t \\ 2\mathbf{Q}^{1/2} \boldsymbol{\beta} \end{bmatrix} \preceq_{\mathcal{C}_5} \mathbf{1} + t, & (\text{cone in } \mathbb{R}^{2+(J_0+KM) \cdot J_1}) \end{aligned}$$

where  $\mathcal{K} = \mathcal{C}_1 \times \mathcal{C}_2 \times \mathcal{C}_3 \times \mathcal{C}_4 \times \mathcal{C}_5 = \mathbb{R}_+ \times \mathbb{R}_+^{J_0 \cdot J_1} \times \mathbb{R}_+^{J_1} \times \mathcal{K}_{1+J_0}^{J_1} \times \mathcal{K}_{1+(J_0+KM) \cdot J_1}$  is the conic constraint for this program,  $\mathbf{a} = -2(' \widehat{\mathbf{Q}} \widehat{\boldsymbol{\beta}} + \mathbf{G}^*)'$ , and  $f = \widehat{\boldsymbol{\beta}}' \widehat{\mathbf{Q}} \widehat{\boldsymbol{\beta}} + 2\mathbf{G}^* \widehat{\boldsymbol{\beta}}$ .

**Lasso-type  $\mathcal{W}$ .** We show how to write the QCQP as a SOCP when  $\mathcal{W}$  has a lasso-type constraint. In this case, the SC weight construction (3.1) has the form:

$$\begin{aligned} \min_{\mathbf{w}, \mathbf{r}} \quad & (\mathbf{A} - \mathbf{B}\mathbf{w} - \mathbf{C}\mathbf{r})' \mathbf{V} (\mathbf{A} - \mathbf{B}\mathbf{w} - \mathbf{C}\mathbf{r}) & (\text{S.5.6}) \\ \text{subject to} \quad & \|\mathbf{w}^{[i]}\|_1 \leq Q_1^{[i]}, \quad i = 1, \dots, J_1 & (\text{L1 inequality constraints}) \end{aligned}$$

We can write the optimization problem in (S.5.6) as a SOCP of the following form

$$\begin{aligned} \min_{\mathbf{w}, \mathbf{r}, \{\mathbf{z}_i\}_{i=1}^{J_1}, v} \quad & v \\ \text{subject to} \quad & \begin{bmatrix} 1 - v \\ 2\mathbf{V}^{1/2} (\mathbf{A} - \mathbf{B}\mathbf{w} - \mathbf{C}\mathbf{r}) \end{bmatrix} \preceq_{\mathcal{C}_1} \mathbf{1} + v, & (\text{cone in } \mathbb{R}^{2+T_0 \cdot M \cdot J_1}) \\ & \mathbf{1}' \mathbf{z}_i \preceq_{\mathcal{C}_2} Q_1^{[i]}, \quad i = 1, \dots, J_1, & (J_1 \text{ cones in } \mathbb{R}) \\ & -\mathbf{w} \preceq_{\mathcal{C}_3} \mathbf{z}, & (\text{cone in } \mathbb{R}^{J_0 \cdot J_1}) \end{aligned}$$



$$\mathbf{w} \preceq_{\mathcal{C}_4} \mathbf{z}, \quad (\text{cone in } \mathbb{R}^{J_0 \cdot J_1})$$

where  $\mathcal{K} = \mathcal{C}_1 \times \mathcal{C}_2^{J_1} \times \mathcal{C}_3 \times \mathcal{C}_4 = \mathcal{K}_{1+T_0 \cdot M \cdot J_1} \times \mathbb{R}_+^{J_1} \times \mathbb{R}_+^{J_0 \cdot J_1} \times \mathbb{R}_+^{J_0 \cdot J_1}$  is the conic constraint for this program and  $\mathbf{z} := (\mathbf{z}'_1, \dots, \mathbf{z}'_{J_1})'$ .

For uncertainty quantification, we need to solve the optimization problem underlying (4.4). Here we discuss the lower bound only for brevity. Recalling that  $\boldsymbol{\beta} = (\mathbf{w}', \mathbf{r}')'$ , we have

$$\begin{aligned} \inf_{\boldsymbol{\beta}=(\mathbf{w}', \mathbf{r}')'} \quad & \mathbf{p}'_{\tau}(\boldsymbol{\beta} - \widehat{\boldsymbol{\beta}}) & (\text{S.5.7}) \\ \text{subject to} \quad & \|\mathbf{w}^{[i]}\|_1 \leq Q_1^{[i]} + \varrho^{[i]}, \quad i = 1, \dots, J_1, & (\text{L1 inequality constraints}) \\ & (\boldsymbol{\beta} - \widehat{\boldsymbol{\beta}})' \widehat{\mathbf{Q}} (\boldsymbol{\beta} - \widehat{\boldsymbol{\beta}}) - 2(\mathbf{G}^*)'(\boldsymbol{\beta} - \widehat{\boldsymbol{\beta}}) \leq 0, & (\text{constrained least squares}) \end{aligned}$$

where the scalars  $\varrho_1^{[i]}, i = 1, \dots, J_1$  are regularization parameters used to relax  $\Delta$  to  $\Delta^*$ .

We can cast the SC optimization problem in (S.5.7) in conic form as follows:

$$\begin{aligned} \min_{\mathbf{w}, \mathbf{r}, \{\mathbf{z}_i\}_{i=1}^{J_1}, t} \quad & \mathbf{p}'_{\tau} \boldsymbol{\beta} \\ \text{subject to} \quad & t + \mathbf{a}' \boldsymbol{\beta} + f \preceq_{\mathcal{C}_1} 0, & (\text{cone in } \mathbb{R}) \\ & \mathbf{1}' \mathbf{z}^{[i]} \preceq_{\mathcal{C}_2} Q_1^{[i]} + \varrho^{[i]}, \quad i = 1, \dots, J_1, & (J_1 \text{ cones in } \mathbb{R}) \\ & -\mathbf{w} \preceq_{\mathcal{C}_3} \mathbf{z}, & (\text{cone in } \mathbb{R}^{J_0 \cdot J_1}) \\ & \mathbf{w} \preceq_{\mathcal{C}_4} \mathbf{z}. & (\text{cone in } \mathbb{R}^{J_0 \cdot J_1}) \\ & \begin{bmatrix} 1 - t \\ 2\mathbf{Q}^{1/2} \boldsymbol{\beta} \end{bmatrix} \preceq_{\mathcal{C}_5} \mathbf{1} + t, & (\text{cone in } \mathbb{R}^{2+(J_0+KM) \cdot J_1}) \end{aligned}$$

where  $\mathcal{K} = \mathcal{C}_1 \times \mathcal{C}_2^{J_1} \times \mathcal{C}_3 \times \mathcal{C}_4 \times \mathcal{C}_5 = \mathbb{R}_+ \times \mathbb{R}_+^{J_1} \times \mathbb{R}_+^{J_0 \cdot J_1} \times \mathbb{R}_+^{J_0 \cdot J_1} \times \mathcal{K}_{1+(J_0+KM) \cdot J_1}$  is the conic constraint for this program,  $\mathbf{a} = -2(\widehat{\mathbf{Q}} \widehat{\boldsymbol{\beta}} + \mathbf{G}^*)'$ , and  $f = \widehat{\boldsymbol{\beta}}' \widehat{\mathbf{Q}} \widehat{\boldsymbol{\beta}} + 2\mathbf{G}^* \widehat{\boldsymbol{\beta}}$ .

## S.6 Data Preparation and Software Implementation

In this section, we first describe the variables in the [Billmeier and Nannicini \(2013\)](#) (BN, henceforth) dataset and then go through the details of our empirical specification.

### S.6.1 Data Description

The original BN dataset contains data on some economic and political variables for 180 countries, over a period of time spanning from 1960 to 2005.<sup>1</sup> In detail, the variables available in the dataset are:

- real GDP per capita in 2002 US dollars.
- enrollment rate in secondary schooling.
- population growth.
- yearly inflation rate.
- the investment ratio (the investment of a country as a percentage of GDP).
- an indicator that captures whether the country is a democracy (1) or not (0).
- an indicator that captures whether the economy of the country is considered closed (0) or not (1) as developed in [Sachs, Warner, Åslund and Fischer \(1995\)](#) (henceforth, Sachs-Warner indicator). In particular, the indicator takes value 0 if any of the following conditions is verified:
  - i) the average tariff is above 40%;
  - ii) non-tariff barriers are imposed on a volume of imports larger than 40%;
  - iii) the country has a socialist economic system;
  - iv) the exchange rate black market premium is above 20%;
  - v) state monopolies control most of the country exports.

Despite having six candidate variables to match on, we end up matching on at most two variables because of missing data. Specifically, we always match on real GDP per-capita, whereas in the robustness exercise in Supplemental Appendix [S.7](#) we also match on investment-to-GDP ratio.

A second difference of our final dataset from the original one used in BN is the final pool of countries - treated and donors - on which we conduct the analysis. In particular, we adopt the following criteria to select the countries to be included in our final dataset as either donors or treated units:

1. We restrict the analysis to countries in Sub-Saharan Africa. We define this group by excluding from the analysis North African countries according to the United Nations (UN) classification (Algeria, Egypt, Libya, Morocco, Sudan, Tunisia, and Western Sahara) as well as any additional country that is not covered by the UN classification but is a member of the Arab League (Djibouti, Mauritania, Somalia).

---

<sup>1</sup>We downloaded the dataset from the Harvard Dataverse at <https://dataverse.harvard.edu/dataset.xhtml?persistentId=doi:10.7910/DVN/28699>.

2. As in [Bratton and Van de Walle \(1997\)](#), we exclude Namibia because the Sachs-Werner indicator is missing for such a country.

Table [S.3](#) shows the final set of countries we select, together with their treatment date.

**Table S.3:** *List of all countries included in our analysis*

Angola	$\infty$	Lesotho	$\infty$
Benin	1990	Madagascar	1996
Botswana	1979	Malawi	$\infty$
Burkina Faso	1998	Mali	1988
Burundi	1999	Mauritius	1968
Cabo Verde	1991	Mozambique	1995
Cameroon	1993	Niger	1994
Chad	$\infty$	Nigeria	$\infty$
Congo	$\infty$	Rwanda	$\infty$
Ethiopia	1996	Senegal	$\infty$
Gabon	$\infty$	Sierra Leone	$\infty$
Gambia	1985	South Africa	1991
Ghana	1985	Tanzania	1995
Guinea	1986	Togo	$\infty$
Guinea-Bissau	1987	Uganda	1988
Ivory Coast	1994	Zambia	1993
Kenya	1993	Zimbabwe	$\infty$

*Notes:*  $\infty$  denotes that a country has never experienced liberalization during the observed time span.

## S.6.2 Implementation details

This section first summarizes the main procedures underlying the computation of the synthetic control weights  $\widehat{\mathbf{w}}$  ([Algorithm 1](#)) and the quantification of in-sample and out-of-sample uncertainty ([Algorithm 2](#)) in general, then, it specializes it to the main empirical application presented in the main text.

### S.6.2.1 Summary of Algorithmic Implementation

We use  $q_Z(\alpha)$  to denote the  $\alpha$ -th quantile of the random variable  $Z$ , and assume that the researcher has collected some data denoted by  $\{(Y_{it}, I_{it}, T_i)_{i=1}^N : t = 1, \dots, T\}$ , where  $Y_{it}$  indicates the outcome of interest,  $\mathbf{X}_{it}$  is a vector of other features, and  $T_i$  is a variable indicating the treatment timing.

---

#### Algorithm 1 Computation of $\widehat{\mathbf{w}}$

---

**Require:** data  $\{(Y_{it}, \mathbf{X}_{it}, T_i)_{i=1}^N : t = 1, \dots, T\}$

define the conditioning set  $\mathcal{H} = \{\mathbf{B}, \mathbf{C}, \mathbf{p}_\tau\}$

a: choose target predictand  $\tau$  (see [Section 3.1](#))

b: choose features in  $(Y_{it}, \mathbf{X}_{it})$  to include in  $\mathbf{A}$  and  $\mathbf{B}$

c: choose adjustment covariates to include in  $\mathbf{C}$  (e.g., linear trend, constant)

choose shape of feasibility sets  $\mathcal{W}$  and  $\mathcal{R}$

choose a symmetric weighting matrix  $\mathbf{V}$

solve optimization problem in [\(6.1\)](#) and get  $\widehat{\boldsymbol{\beta}} = (\widehat{\mathbf{w}}', \widehat{\mathbf{r}})'$

---

---

**Algorithm 2** Uncertainty Quantification

---

**Require:** choose levels  $\alpha_1, \alpha_2 \in (0, 1)$  and the number of simulations  $S$

---

**In-sample Uncertainty Quantification**

---

form feasible constraint set  $\Delta^*$

a: calculate  $\varrho$  using (6.8) and using  $\varrho_j, j = 1, \dots, d_{\text{in}}$  (6.9)

b: obtain  $\mathcal{A} = \{j : m_{\leq j}(\widehat{\beta}) > -\varrho_j\}$

c: get  $\Delta^*$  using (6.7)

estimate  $\Sigma$

a: estimate conditional moments of the pseudo-residual  $\mathbf{u}$ ,  $\mathbb{E}[\mathbf{u}|\mathcal{H}]$  and  $\mathbb{V}[\mathbf{u}|\mathcal{H}]$

b: compute  $\widehat{\Sigma} = (\mathbf{Z}'\mathbf{V})\widehat{\mathbb{V}}[\mathbf{u}|\mathcal{H}](\mathbf{V}\mathbf{Z})$  where  $\mathbf{Z} = (\mathbf{B}, \mathbf{C})$

**for**  $s \leftarrow 1$  to  $S$  **do:**

a: draw  $\mathbf{G}^* \sim \mathbf{N}(\mathbf{0}, \widehat{\Sigma})$

b: define  $\ell^*(\beta) = \beta'\widehat{\mathbf{Q}}\beta - 2(\mathbf{G}^*)'\beta$

c: solve

$$l_{(s)} := \inf_{\substack{\beta \in \Delta^* \\ \ell^*(\beta) \leq 0}} \mathbf{p}'_{\tau}\beta \quad \text{and} \quad u_{(s)} := \sup_{\substack{\beta \in \Delta^* \\ \ell^*(\beta) \leq 0}} \mathbf{p}'_{\tau}\beta$$

get  $\underline{M}_{\text{in}}$  as the  $(\alpha_1/2)$ -quantile of  $\{l_{(s)}\}_{s=1}^S$  and  $\overline{M}_{\text{in}}$  as the  $(1 - \alpha_1/2)$ -quantile of  $\{u_{(s)}\}_{s=1}^S$

---

**Out-of-sample Uncertainty Quantification**

---

**procedure** SUB-GAUSSIAN:

a: use pre-treatment residuals to estimate  $\mathbb{E}[e_{\tau}|\mathcal{H}]$  and  $\sigma_{\mathcal{H}}^2$

b: get

$$M_{2,\text{L}} := \widehat{\mathbb{E}}[e_{\tau}|\mathcal{H}] - \sqrt{2\hat{\sigma}_{\mathcal{H}}^2 \log(2/\alpha_2)} \quad \text{and} \quad M_{2,\text{U}} := \widehat{\mathbb{E}}[e_{\tau}|\mathcal{H}] + \sqrt{2\hat{\sigma}_{\mathcal{H}}^2 \log(2/\alpha_2)}$$

**end procedure**

---

A more detailed discussion of the procedures, including recommended rules of thumb for implementation and other practical regularization choices, can be found in [Cattaneo, Feng, Palomba and Titiunik \(2024, Section 3.1 and Section 4.3\)](#).

### S.6.2.2 Specifics of Empirical Application

**Constraint type.** Our preferred specification uses the L1-L2 constraint, i.e.,

$$\mathcal{W}_{\text{L1-L2}} = \bigtimes_{i=1}^{J_1} \left\{ \mathbf{w}^{[i]} \in \mathbb{R}_+^{J_0} : \|\mathbf{w}^{[i]}\|_1 = 1, \|\mathbf{w}^{[i]}\|_2 \leq Q^{[i]} \right\},$$

whereas the results in the Supplemental Appendix Section [S.7.2](#) and [S.7.1](#) use simplex- and Ridge-type constraints of the form

$$\mathcal{W}_{\text{S}} = \bigtimes_{i=1}^{J_1} \left\{ \mathbf{w}^{[i]} \in \mathbb{R}_+^{J_0} : \|\mathbf{w}^{[i]}\|_1 = 1 \right\}, \quad \mathcal{W}_{\text{R}} = \bigtimes_{i=1}^{J_1} \left\{ \mathbf{w}^{[i]} \in \mathbb{R}^{J_0} : \|\mathbf{w}^{[i]}\|_2 \leq Q^{[i]} \right\}.$$

Table S.4 shows the effective values for  $Q^{[i]}, i = 1, \dots, J_1$  that we compute in our empirical application. Further below we explain in greater detail how these regularization parameters are computed in practice.

**Selected features.** Our main specification uses only one feature ( $M = 1$ )—the logarithm of real GDP per-capita—, uses the identify weighting matrix, and includes a constant term, that is

$$\mathbf{B}^{[i]} = [\mathbf{Y}_1 \ \cdots \ \mathbf{Y}_{J_0}], \quad \mathbf{C}^{[i]} = \mathbf{1}_{T_i}, \quad \mathcal{R} = \mathbb{R}^{J_1}, \quad \mathbf{V}^{[i]} = \mathbf{I}_{T_i}, \quad i = 1, \dots, J_1,$$

where  $\mathbf{Y}_j = (Y_{j1}, \dots, Y_{jT_i})', j = 1, \dots, J_0$  is the pre-treatment log-GDP per-capita of the  $j$ -th donor,  $\mathbf{1}_{T_i}$  is a  $T_i \times 1$  vector of ones, and  $\mathbf{I}_{T_i}$  is the  $T_i \times T_i$  identify matrix.

In Supplemental Appendix Section S.7.3, we present results using two features ( $M = 2$ ), where we also match on the investment-to-GDP ratio and control for a feature-specific constant term and linear trend, i.e.

$$\mathbf{B}^{[i]} = \begin{bmatrix} \mathbf{Y}_1 & \cdots & \mathbf{Y}_{J_0} \\ \mathbf{IR}_1 & \cdots & \mathbf{IR}_{J_0} \end{bmatrix}, \quad \mathbf{C}^{[i]} = \begin{bmatrix} 1 & 1 \\ 1 & 2 \\ \vdots & \vdots \\ 1 & T_i \end{bmatrix}, \quad \mathcal{R} = \mathbb{R}^{2 \cdot J_1}, \quad \mathbf{V}^{[i]} = \begin{bmatrix} \mathbf{S}_Y^{[i]} & \mathbf{0} \\ \mathbf{0} & \mathbf{S}_{IR}^{[i]} \end{bmatrix}, \quad i = 1, \dots, J_1,$$

where  $\mathbf{IR}_j = (IR_{j1}, \dots, IR_{jT_i})', j = 1, \dots, J_0$  is the pre-treatment investment-to-GDP ratio of the  $j$ -th donor,  $\mathbf{S}_Y^{[i]} = \text{diag}(\hat{\sigma}_{Y,1}^{-1}, \dots, \hat{\sigma}_{Y,T_i}^{-1})$ ,  $\mathbf{S}_{IR}^{[i]} = \text{diag}(\hat{\sigma}_{IR,1}^{-1}, \dots, \hat{\sigma}_{IR,T_i}^{-1})$ , with

$$\hat{\sigma}_{W,t} = \left( \frac{1}{J_0 - 1} \sum_{j=1}^{J_0} (W_{jt} - \bar{W}_t)^2 \right)^{1/2}, \quad \bar{W}_t = \frac{1}{J_0} \sum_{i=1}^{J_0} W_{jt}, \quad t = 1, \dots, T_i, \quad W \in \{Y, IR\},$$

and  $\text{diag}(\mathbf{x})$  yields a square diagonal matrix with the elements of  $\mathbf{x}$  on its main diagonal.

**Tuning parameters.** Regarding the choice of  $Q^{[i]}$ , it is well-established that the Ridge regression problem can be equivalently expressed both as an unconstrained penalized optimization problem and as a constrained optimization problem. For simplicity, assume  $\mathbf{C}$  is not included and  $M = 1$ . The two Ridge-type optimization formulations are as follows:

$$\hat{\mathbf{w}}^{[i]} = \arg \min_{\mathbf{w}^{[i]} \in \mathcal{W}} (\mathbf{A}^{[i]} - \mathbf{B}^{[i]} \mathbf{w}^{[i]})' \mathbf{V}^{[i]} (\mathbf{A}^{[i]} - \mathbf{B}^{[i]} \mathbf{w}^{[i]}) + \lambda^{[i]} \|\mathbf{w}^{[i]}\|_2^2,$$

where  $\lambda^{[i]} \geq 0$  is a regularization parameter, and

$$\hat{\mathbf{w}}^{[i]} = \arg \min_{\mathbf{w}^{[i]} \in \mathcal{W}, \|\mathbf{w}^{[i]}\|_2 \leq (Q^{[i]})^2} (\mathbf{A}^{[i]} - \mathbf{B}^{[i]} \mathbf{w}^{[i]})' \mathbf{V}^{[i]} (\mathbf{A}^{[i]} - \mathbf{B}^{[i]} \mathbf{w}^{[i]}),$$

where  $Q^{[i]} \geq 0$  is an explicit upper bound on the norm of  $\mathbf{w}^{[i]}$ . Under the assumption of Gaussian errors, an optimal choice of the regularization parameter  $\lambda^{[i]}$  for risk minimization, as suggested by Hoerl et al. (1975), is:

$$\lambda^{[i]} = \frac{J_0 (\hat{\sigma}_{\text{OLS}}^{[i]})^2}{\|\hat{\mathbf{w}}_{\text{OLS}}^{[i]}\|_2^2},$$

where  $(\hat{\sigma}_{\text{OLS}}^{[i]})^2$  and  $\hat{\mathbf{w}}_{\text{OLS}}^{[i]}$  are the estimates of the residual variance and the coefficients from the ordinary least squares (OLS) regression of  $\mathbf{A}^{[i]}$  onto  $\mathbf{B}^{[i]}$ , respectively. Given the two optimization

problems above, there exists a one-to-one correspondence between  $\lambda^{[i]}$  and  $Q^{[i]}$ . For example, assuming the columns of  $\mathbf{B}^{[i]}$  are orthonormal, the closed-form solution for the Ridge estimator is:

$$\widehat{\mathbf{w}}^{[i]} = (\mathbf{I} + \lambda^{[i]}\mathbf{I})^{-1}\widehat{\mathbf{w}}_{\text{OLS}}^{[i]},$$

and if the constraint on the  $\ell_2$ -norm is active, we have  $Q^{[i]} = \|\widehat{\mathbf{w}}^{[i]}\|_2 = \|\widehat{\mathbf{w}}_{\text{OLS}}^{[i]}\|_2/(1 + \lambda^{[i]})$ . When more than one feature is considered (i.e.,  $M > 1$ ), we compute the constraint size  $Q_\ell^{[i]}$  for each feature  $\ell = 1, \dots, M$ , and then choose  $Q^{[i]}$  as the most restrictive constraint to promote shrinkage of  $\mathbf{w}^{[i]}$ :

$$Q^{[i]} := \min_{\ell=1, \dots, M} Q_\ell^{[i]}.$$

**Table S.4:** Pre-treatment length and values of the regularization parameters  $Q^{[i]}, i = 1, \dots, J_1$ .

<i>Treated Unit</i>	$Q^{[i]}, M = 1$	$Q^{[i]}, M = 2$	$\mathcal{T}_i$	$ \mathcal{T}_i $
Benin	2.041	0.699	1963 - 1989	27
Botswana	2.119	0.771	1963 - 1978	16
Cabo Verde	0.877	0.5	1963 - 1990	28
Cameroon	2.336	0.786	1963 - 1992	30
Gambia	1.401	1.035	1963 - 1984	22
Ghana	0.858	0.972	1963 - 1984	22
Guinea	0.591	0.65	1963 - 1985	23
Guinea-Bissau	0.942	0.718	1963 - 1986	24
Ivory Coast	1.212	0.838	1963 - 1993	31
Kenya	0.959	0.569	1963 - 1992	30
Mali	1.445	0.65	1963 - 1987	25
Mauritius	1.705	1.145	1963 - 1967	5
Niger	2.252	1.793	1963 - 1993	31
South Africa	1.169	0.5	1963 - 1990	28
Uganda	1.797	0.5	1963 - 1987	25
Zambia	2.554	0.5	1963 - 1992	30

*Notes:* the rule of thumb to compute  $Q^{[i]}$  is the same for  $L1$ - $L2$  and Ridge. Moreover, the values for  $Q^{[i]}$  reported are the ones obtained when predicting  $\tau_{it}$  and  $\tau_i$ , which are identical by construction. Finally,  $Q^{[i]}$  is lower-bounded at 0.5 to avoid excessive shrinkage. More details on the rules of thumb used can be found in [Cattaneo, Feng, Palomba and Titiunik \(2024\)](#), Section 3.1.

**In-sample Uncertainty.** In order to quantify the in-sample uncertainty from estimating the SC weights, we need to construct the bounds  $\underline{M}_{\text{in}}$  and  $\overline{M}_{\text{in}}$  on  $\mathbf{p}'_\tau(\widehat{\boldsymbol{\beta}} - \boldsymbol{\beta}_0)$ . The following strategy is adopted. First, we treat the synthetic control weights as possibly misspecified, thus estimating both the first and second conditional moments of the pseudo-true residuals  $\mathbf{u}$ . The conditional first moment  $\mathbb{E}[\mathbf{u} | \mathcal{H}]$  is estimated feature-by-feature using a linear-in-parameters regression of the residual  $\widehat{\mathbf{u}} = \mathbf{A} - \mathbf{B}\widehat{\mathbf{w}} - \mathbf{C}\widehat{\mathbf{r}}$  on  $\mathbf{B}$  and the first lag of  $\mathbf{B}$ , whereas the conditional second moment  $\mathbb{V}[\mathbf{u} | \mathcal{H}]$  is estimated with an HC1-type estimator. We then draw  $S = 200$  i.i.d. random vectors from the Gaussian distribution  $\mathbf{N}(0, \widehat{\boldsymbol{\Sigma}})$ , conditional on the data, to simulate the criterion function  $\ell_{(s)}^*(\boldsymbol{\beta} - \boldsymbol{\beta}_0) := (\boldsymbol{\beta} - \boldsymbol{\beta}_0)' \widehat{\mathbf{Q}}(\boldsymbol{\beta} - \boldsymbol{\beta}_0) - 2\mathbf{G}'_{(s)}(\boldsymbol{\beta} - \boldsymbol{\beta}_0)$ ,  $s = 1, \dots, 200$ , and solve the following optimization problems

$$l_{(s)} := \inf_{\substack{\boldsymbol{\beta} - \boldsymbol{\beta}_0 \in \Delta^*, \\ \ell_{(s)}^*(\boldsymbol{\beta} - \boldsymbol{\beta}_0) \leq 0}} \mathbf{p}'_\tau(\boldsymbol{\beta} - \boldsymbol{\beta}_0) \quad \text{and} \quad u_{(s)} := \sup_{\substack{\boldsymbol{\beta} - \boldsymbol{\beta}_0 \in \Delta^*, \\ \ell_{(s)}^*(\boldsymbol{\beta} - \boldsymbol{\beta}_0) \leq 0}} \mathbf{p}'_\tau(\boldsymbol{\beta} - \boldsymbol{\beta}_0),$$

where  $\Delta^*$  is constructed as explained in Section 6.1. Finally,  $\underline{M}_{\text{in}}$  is the  $(\alpha_1/2)$ -quantile of  $\{l_{(s)}\}_{s=1}^S$  and  $\overline{M}_{\text{in}}$  is the  $(1 - \alpha_1/2)$ -quantile of  $\{u_{(s)}\}_{s=1}^S$ , where  $\alpha_1$  is set to 0.05.

**Out-of-sample Uncertainty.** In order to quantify the out-of-sample uncertainty from the stochastic error in the post-treatment period, we need to construct the bounds  $\underline{M}_{\text{out}}$  and  $\overline{M}_{\text{out}}$  on the out-of-sample error  $e_\tau$  (associated with the  $\tau$  prediction). We employ the non-asymptotic bounds described in (6.6), assuming that  $e_\tau - \mathbb{E}[e_\tau|\mathcal{H}]$  is sub-Gaussian conditional on  $\mathcal{H}$ . Then, we take

$$\underline{M}_{\text{out}} := \mathbb{E}[e_\tau|\mathcal{H}] - \sqrt{2\sigma_{\mathcal{H}}^2 \log(2/\alpha_2)} \quad \text{and} \quad \overline{M}_{\text{out}} := \mathbb{E}[e_\tau|\mathcal{H}] + \sqrt{2\sigma_{\mathcal{H}}^2 \log(2/\alpha_2)},$$

We set  $\alpha_2 = 0.05$ , and the conditional mean  $\mathbb{E}[e_\tau|\mathcal{H}]$  and the sub-Gaussian parameter  $\sigma_{\mathcal{H}}$  are parametrized and estimated by a linear-in-parameters regression of the pre-treatment residuals on  $\mathbf{B}$ .

Finally, the prediction intervals for the counterfactual outcome and the treatment effect of interest are given by

$$\left[ \mathbf{p}'_\tau \widehat{\boldsymbol{\beta}} - \overline{M}_{\text{in}} + \underline{M}_{\text{out}}; \mathbf{p}'_\tau \widehat{\boldsymbol{\beta}} - \underline{M}_{\text{in}} + \overline{M}_{\text{out}} \right] \quad \text{and} \quad \left[ \widehat{\tau} + \underline{M}_{\text{in}} - \overline{M}_{\text{out}}; \widehat{\tau} + \overline{M}_{\text{in}} - \underline{M}_{\text{out}} \right],$$

respectively.

**Other assumptions.** Throughout all our specifications, we maintain the assumptions that (i) there is no anticipation of the treatment and (ii)  $\mathbf{A}$  and  $\mathbf{B}$  form a cointegrated system. When (i) is relaxed to allow for anticipation results remain qualitatively the same.

## S.7 Robustness Checks

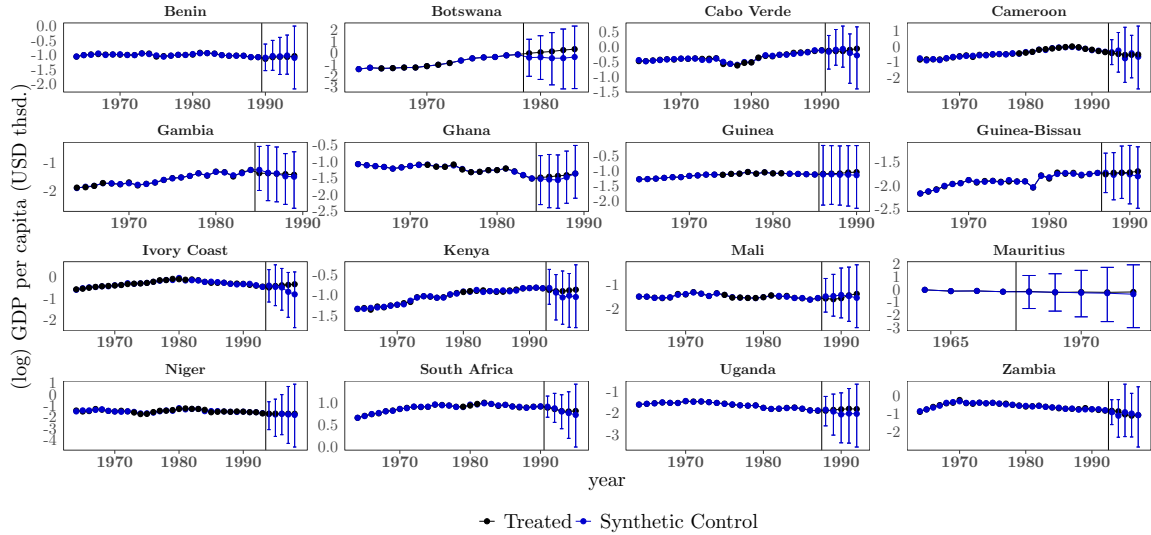
In this Section, we redo the empirical analysis presented in the main paper with five variations: *(i)* using a simplex-type constraint in place of the L1-L2 constraint (Section S.7.1); *(ii)* using a Ridge-type constraint in place of the L1-L2 constraint (Section S.7.2); *(iii)* using the investment-to-GDP ratio as an additional feature (Section S.7.3); *(iv)* using a placebo treatment date (Section S.7.4); and *(v)* leaving one donor out at the time (Section S.7.5).



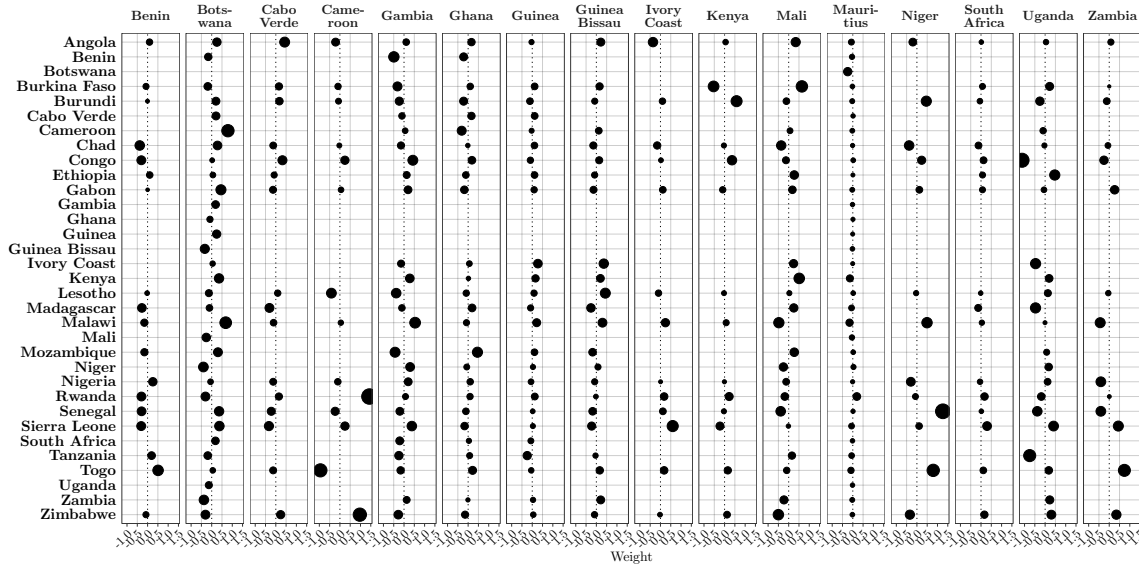
### S.7.1 Ridge-type constraint

TSUS predicted effects in every period after liberalization ( $\tau_{ik}$ ).

Figure S.1: Time-specific unit-specific (TSUS) predicted effects in every period,  $\hat{\tau}_{ik}$ .



(a)  $Y_{it}(T_i)$  and  $\hat{Y}_{it}(\infty)$

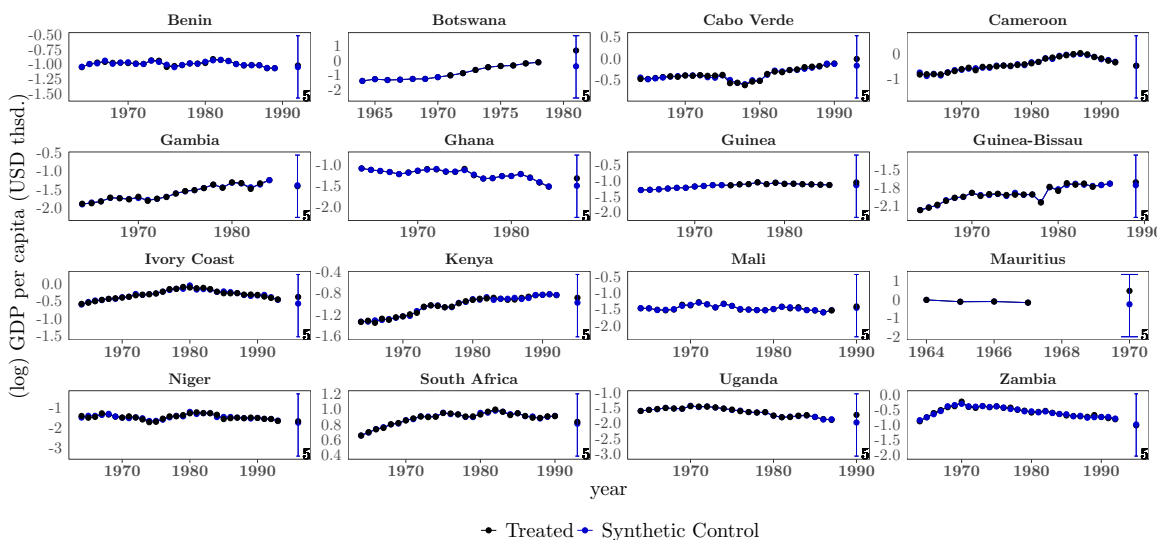


(b)  $\hat{w}_j^{[i]}, i \in \mathcal{E}, j \in \mathcal{N}$

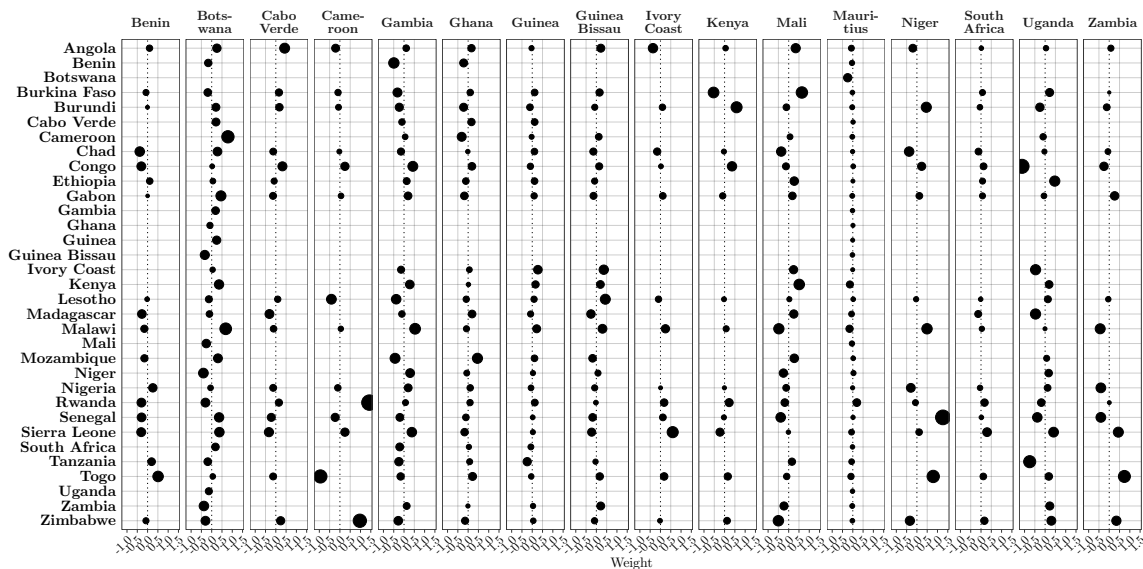
Notes: Panel (a): TSUS prediction for every country in each of five periods after treatment. Blue bars report 90% prediction intervals. In-sample uncertainty is quantified using 200 simulations, whereas out-of-sample uncertainty is quantified using sub-Gaussian bounds. Panel (b): each dot represents the weight that the donor (row) gets in forming the synthetic control for the treated unit (column). When there is no dot, it means that the unit was not part of the donor pool for the treated unit in question.

TAUS predicted effects, averaged over five years ( $\tau_i$ ).

**Figure S.2:** Time-averaged unit-specific (TAUS) predicted effects, averaged over five years,  $\hat{\tau}_i$ .



(a)  $Y_{it}(T_i)$  and  $\hat{Y}_{it}(\infty)$

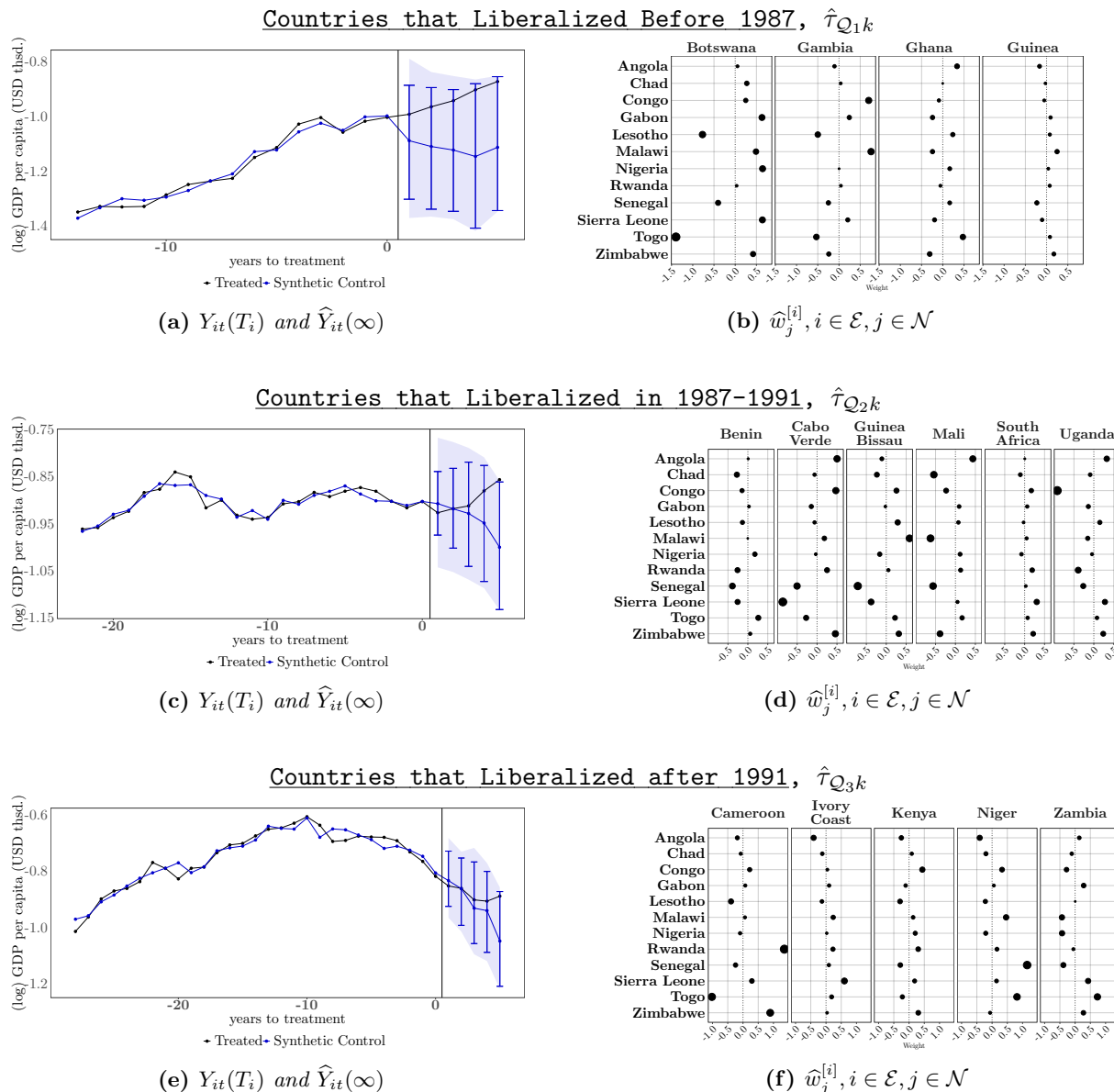


(b)  $\hat{w}_j^{[i]}, i \in \mathcal{E}, j \in \mathcal{N}$

Notes: Panel (a): TAUS prediction for every country averaged over the five periods following treatment (up to the year 2000). Blue bars report 90% prediction intervals. In-sample uncertainty is quantified using 200 simulations, whereas out-of-sample uncertainty is quantified using sub-Gaussian bounds. Panel (b): each dot represents the weight that the donor (row) gets in forming the synthetic control for the treated unit (column). When there is no dot, it means that the unit was not part of the donor pool for the treated unit in question.

TSUA predicted effects, averaged over countries that liberalized in each of three waves: before 1987, between 1987 and 1991, and after 1991 ( $\tau_{Q_1k}, \tau_{Q_2k}, \tau_{Q_3k}$ ).

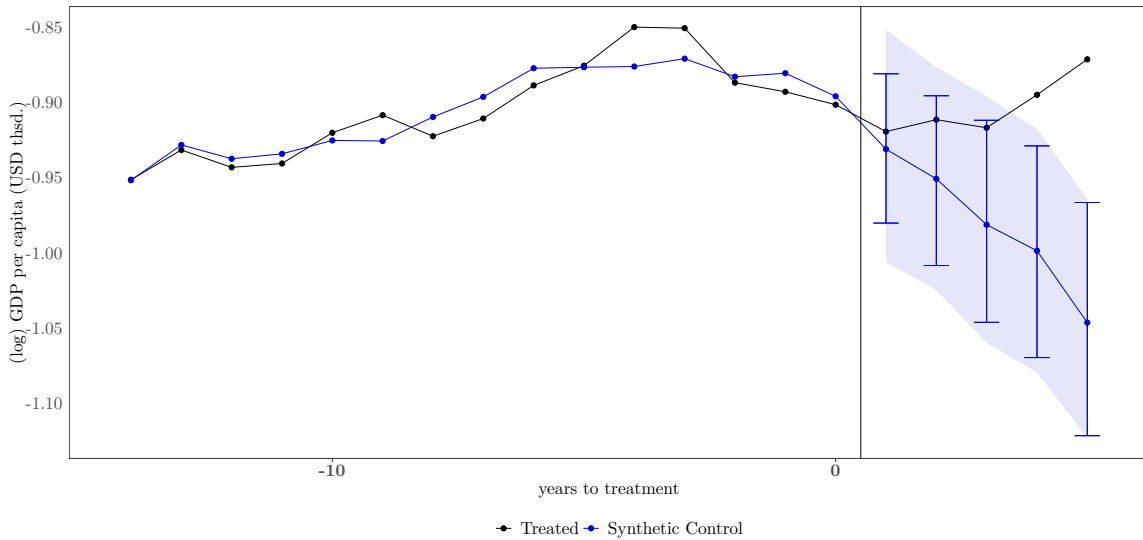
**Figure S.3:** Time-specific unit-averaged (TSUA) predicted effects in each period, averaged over three groups of countries.



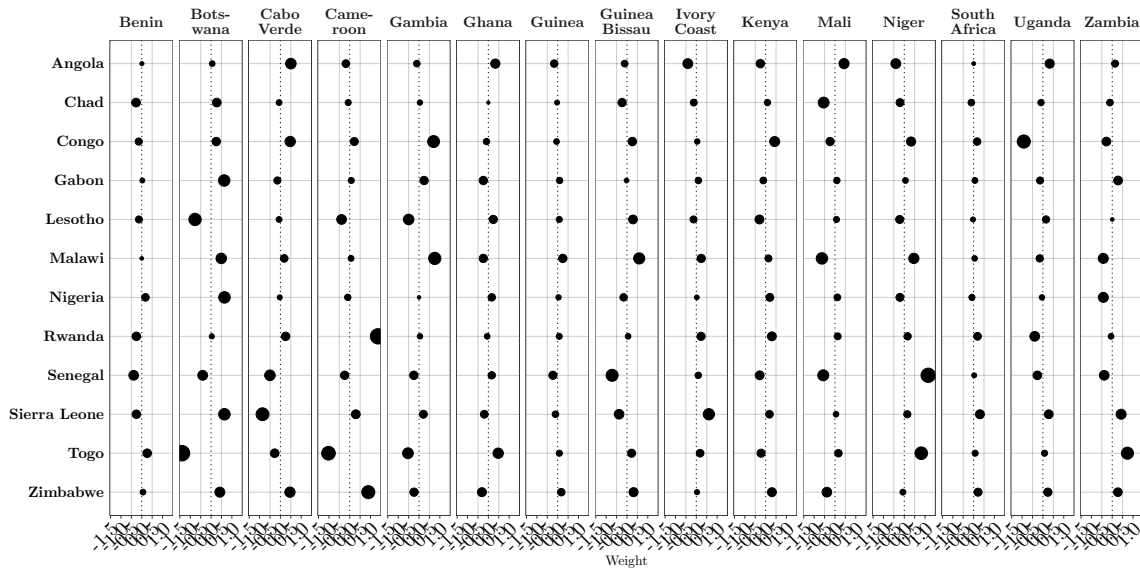
*Notes:* TSUA prediction in every period after treatment (up to five years), averaged over all countries that liberalized in each of three waves: before 1987 (Botswana, Gambia, Ghana, and Guinea), between 1987 and 1991 (Benin, Cabo Verde, Guinea-Bissau, Mali, South Africa, and Uganda), and after 1991 (Burkina Faso, Burundi, Cameroon, Ethiopia, Ivory Coast, Mozambique, Niger, Tanzania, and Zambia). Blue bars report 90% prediction intervals, whereas blue-shaded areas report 90% simultaneous prediction intervals. In-sample uncertainty is quantified using 200 simulations, whereas out-of-sample uncertainty is quantified using sub-Gaussian bounds. Panel (b): each dot represents the weight that the donor (row) gets in forming the synthetic control for the treated unit (column). When there is no dot, it means that the unit was not part of the donor pool for the treated unit in question.

TSUA predicted effects, averaged over all liberalized countries ( $\tau_{\mathcal{E}k}$ ).

**Figure S.4:** Time-specific unit-averaged (TSUA) predicted effect, averaged over all treated units,  $\hat{\tau}_{\mathcal{E}k}$ .



(a)  $Y_{it}(T_i)$  and  $\hat{Y}_{it}(\infty)$



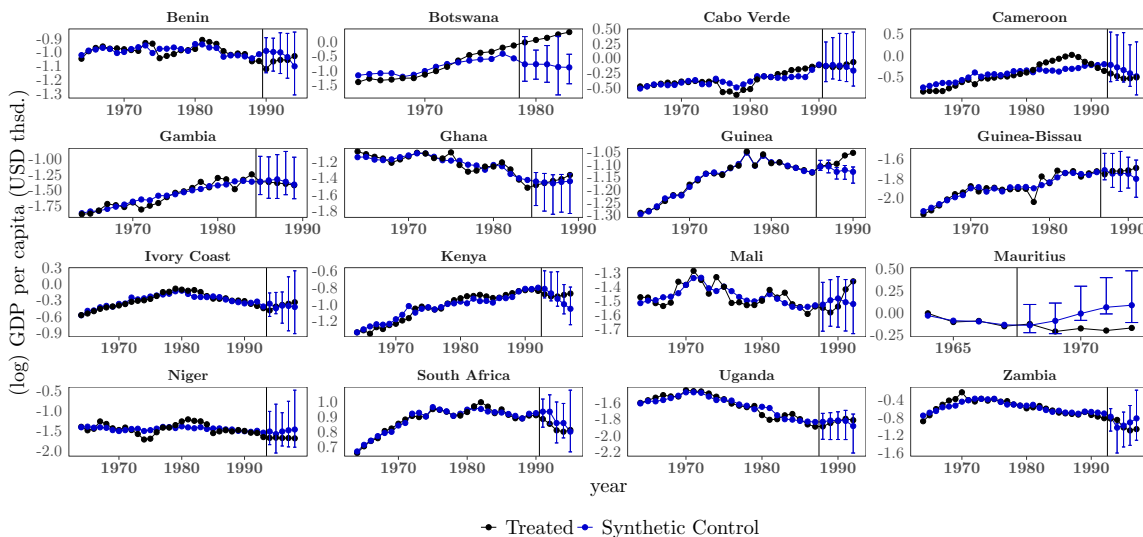
(b)  $\hat{w}_j^{[i]}, i \in \mathcal{E}, j \in \mathcal{N}$

Notes: Panel (a): TSUA prediction in every period after treatment averaged over all the treated countries. Blue bars report 90% prediction intervals, whereas blue-shaded areas report 90% simultaneous prediction intervals. In-sample uncertainty is quantified using 200 simulations, whereas out-of-sample uncertainty is quantified using sub-Gaussian bounds. Panel (b): each dot represents the weight that the donor (row) gets in forming the synthetic control for the treated unit (column). When there is no dot, it means that the unit was not part of the donor pool for the treated unit in question.

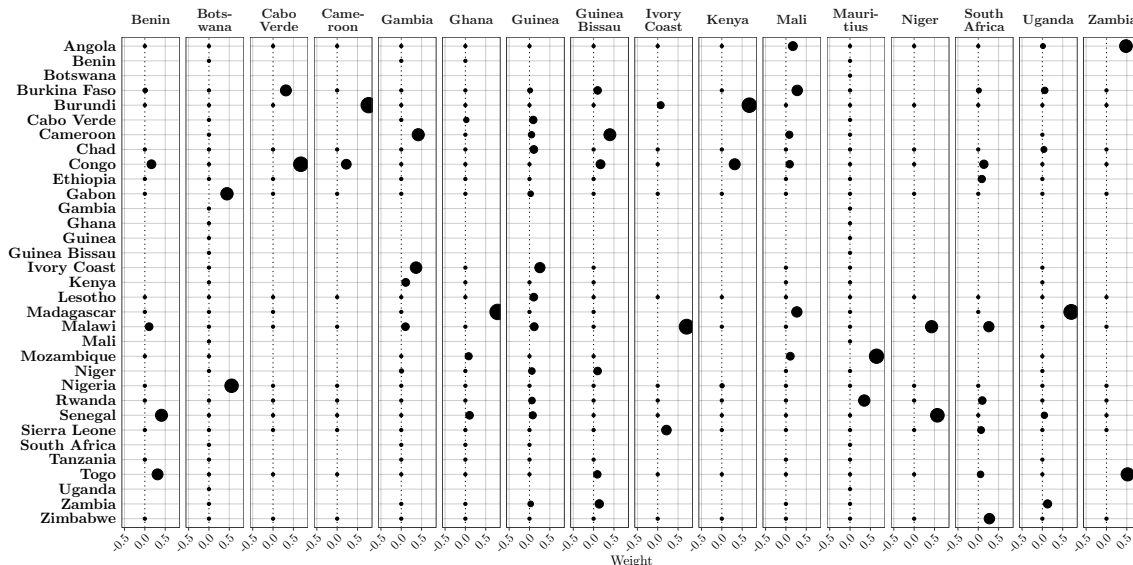
## S.7.2 Simplex-type constraint

TSUS predicted effects in every period after liberalization ( $\tau_{ik}$ ).

Figure S.5: Time-specific unit-specific (TSUS) predicted effects in every period,  $\hat{\tau}_{ik}$ .



(a)  $Y_{it}(T_i)$  and  $\hat{Y}_{it}(\infty)$

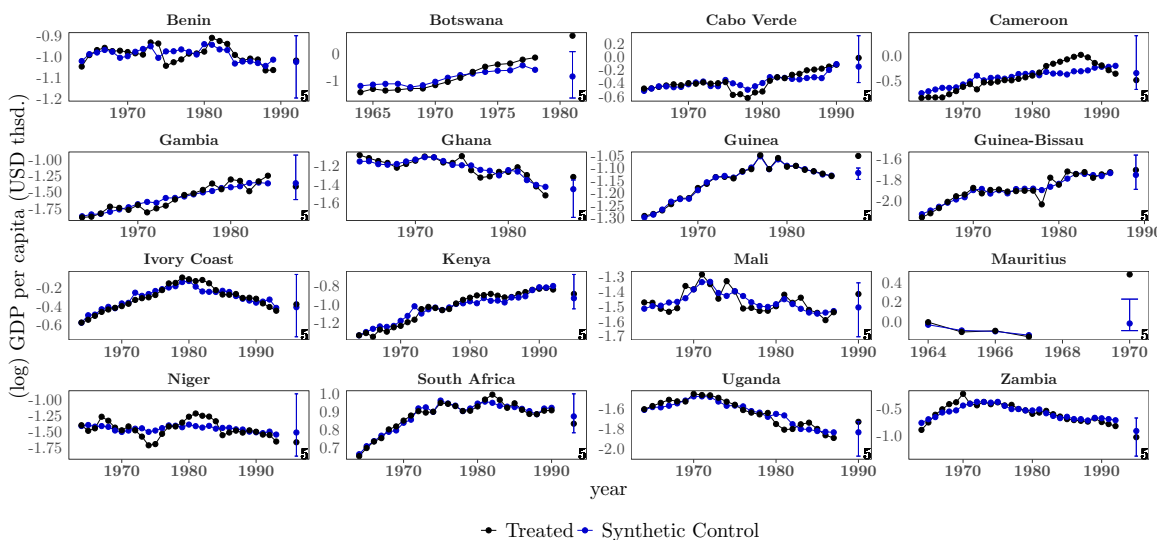


(b)  $\hat{w}_j^{[i]}, i \in \mathcal{E}, j \in \mathcal{N}$

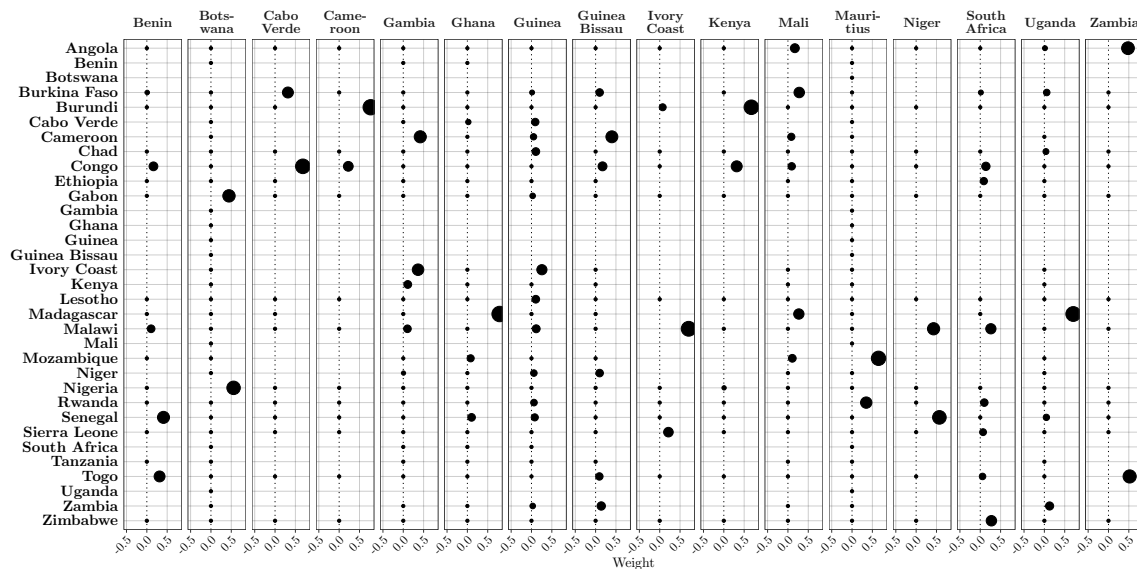
Notes: Panel (a): TSUS prediction for every country in each of five periods after treatment. Blue bars report 90% prediction intervals. In-sample uncertainty is quantified using 200 simulations, whereas out-of-sample uncertainty is quantified using sub-Gaussian bounds. Panel (b): each dot represents the weight that the donor (row) gets in forming the synthetic control for the treated unit (column). When there is no dot, it means that the unit was not part of the donor pool for the treated unit in question.

TAUS predicted effects, averaged over five years ( $\tau_i$ ).

**Figure S.6:** Time-averaged unit-specific (TAUS) predicted effects, averaged over five years,  $\hat{\tau}_i$ .



(a)  $Y_{it}(T_i)$  and  $\hat{Y}_{it}(\infty)$

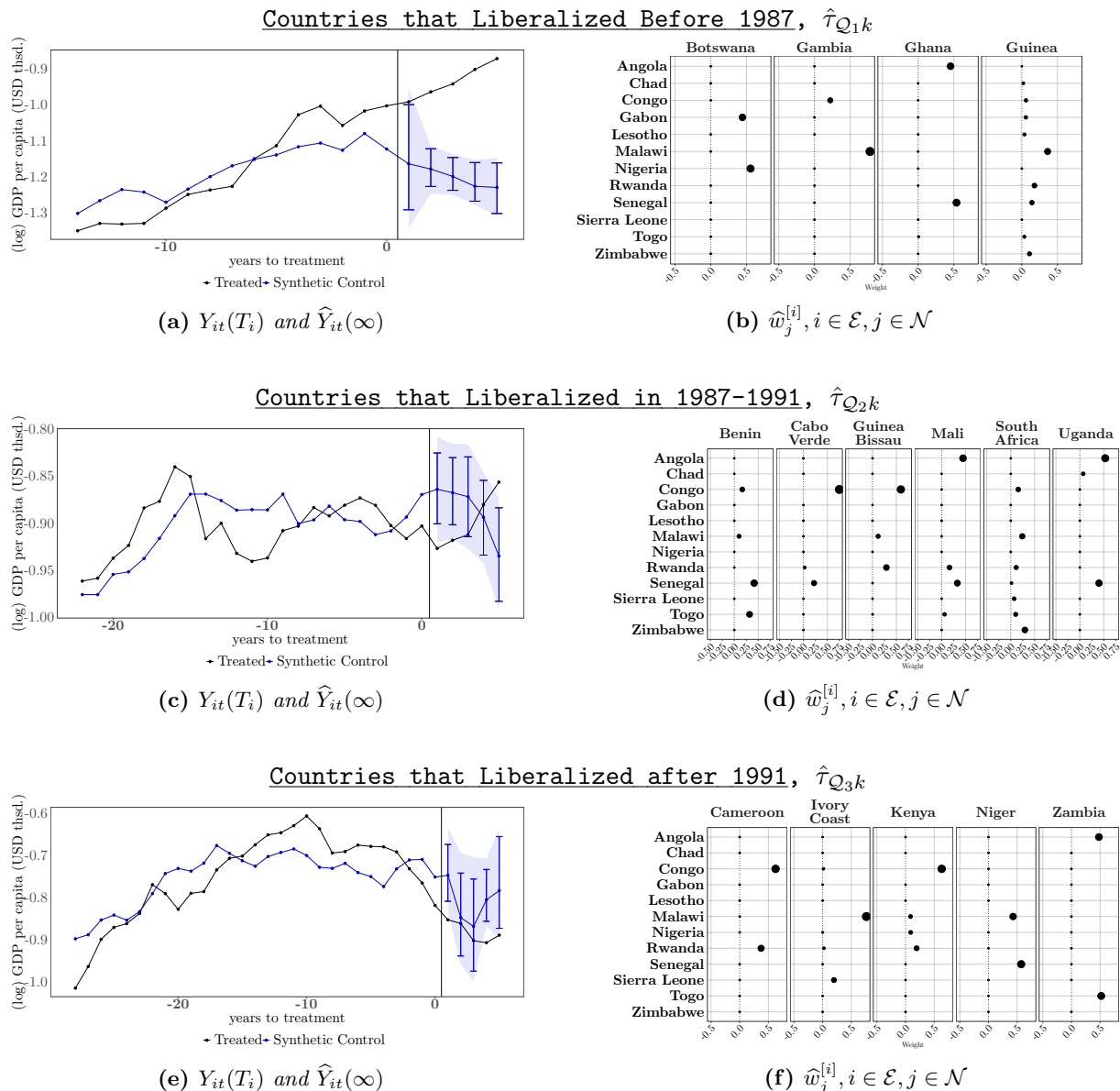


(b)  $\hat{w}_j^{[i]}, i \in \mathcal{E}, j \in \mathcal{N}$

*Notes:* Panel (a): TAUS prediction for every country averaged over the five periods following treatment (up to the year 2000). Blue bars report 90% prediction intervals. In-sample uncertainty is quantified using 200 simulations, whereas out-of-sample uncertainty is quantified using sub-Gaussian bounds. Panel (b): each dot represents the weight that the donor (row) gets in forming the synthetic control for the treated unit (column). When there is no dot, it means that the unit was not part of the donor pool for the treated unit in question.

TSUA predicted effects, averaged over countries that liberalized in each of three waves: before 1987, between 1987 and 1991, and after 1991 ( $\tau_{Q_1k}, \tau_{Q_2k}, \tau_{Q_3k}$ ).

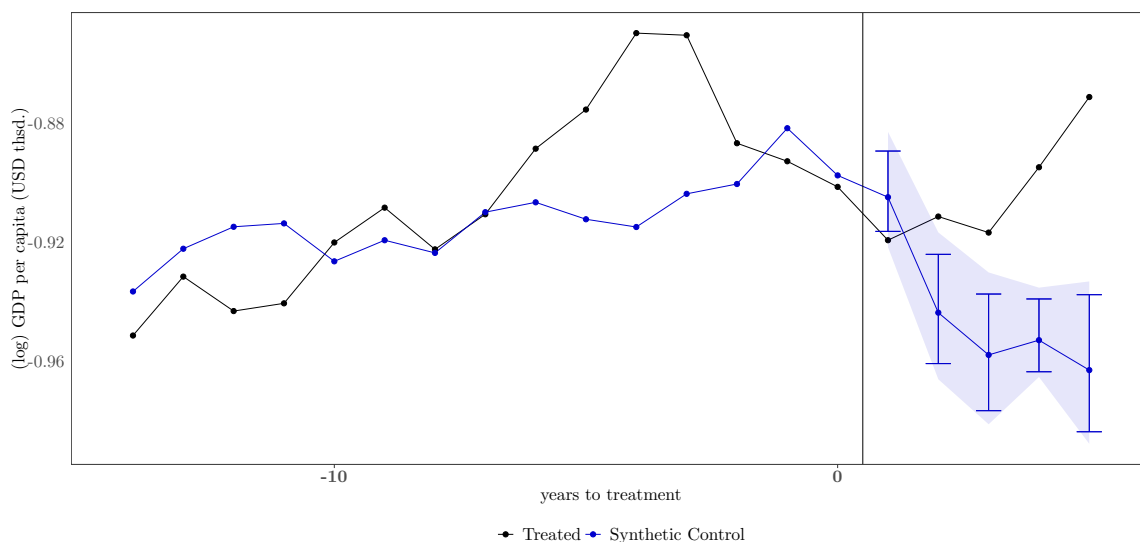
**Figure S.7:** Time-specific unit-averaged (TSUA) predicted effects in each period, averaged over three groups of countries.



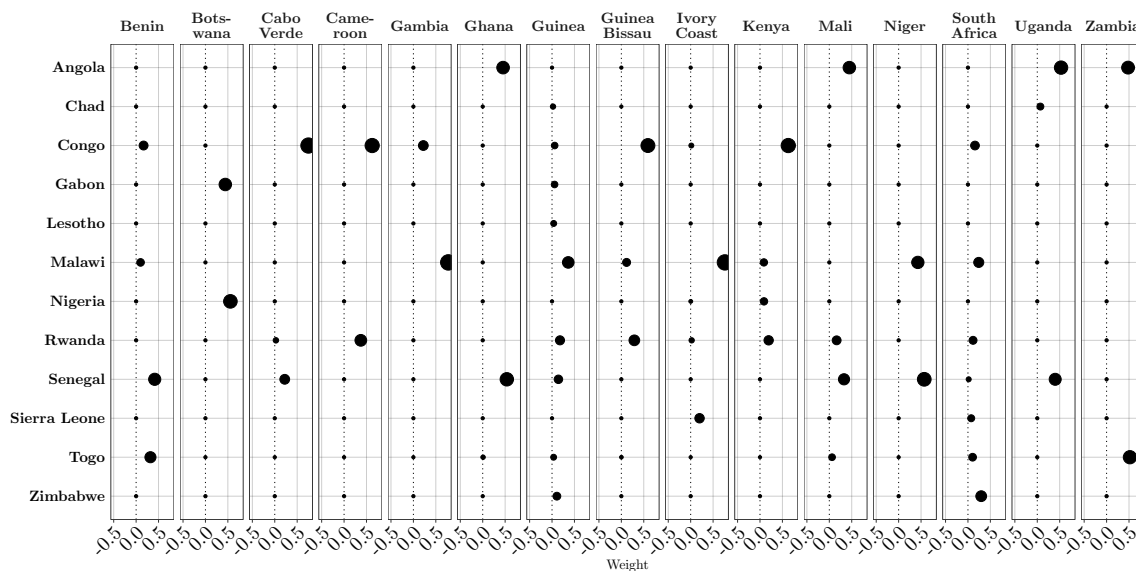
*Notes:* TSUA prediction in every period after treatment (up to five years), averaged over all countries that liberalized in each of three waves: before 1987 (Botswana, Gambia, Ghana, and Guinea), between 1987 and 1991 (Benin, Cabo Verde, Guinea-Bissau, Mali, South Africa, and Uganda), and after 1991 (Burkina Faso, Burundi, Cameroon, Ethiopia, Ivory Coast, Mozambique, Niger, Tanzania, and Zambia). Blue bars report 90% prediction intervals, whereas blue-shaded areas report 90% simultaneous prediction intervals. In-sample uncertainty is quantified using 200 simulations, whereas out-of-sample uncertainty is quantified using sub-Gaussian bounds. Panel (b): each dot represents the weight that the donor (row) gets in forming the synthetic control for the treated unit (column). When there is no dot, it means that the unit was not part of the donor pool for the treated unit in question.

TSUA predicted effects, averaged over all liberalized countries ( $\tau_{\mathcal{E}k}$ ).

**Figure S.8:** Time-specific unit-averaged (TSUA) predicted effect, averaged over all treated units,  $\hat{\tau}_{\mathcal{E}k}$ .



(a)  $Y_{it}(T_i)$  and  $\hat{Y}_{it}(\infty)$



(b)  $\hat{w}_j^{[i]}, i \in \mathcal{E}, j \in \mathcal{N}$

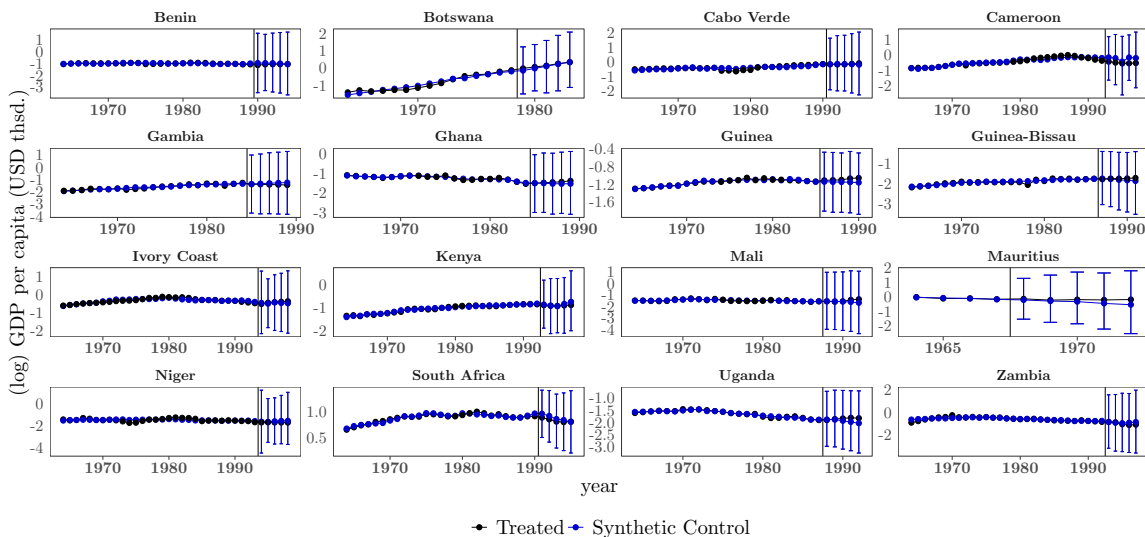
*Notes:* Panel (a): TSUA prediction in every period after treatment averaged over all the treated countries. Blue bars report 90% prediction intervals, whereas blue-shaded areas report 90% simultaneous prediction intervals. In-sample uncertainty is quantified using 200 simulations, whereas out-of-sample uncertainty is quantified using sub-Gaussian bounds. Panel (b): each dot represents the weight that the donor (row) gets in forming the synthetic control for the treated unit (column). When there is no dot, it means that the unit was not part of the donor pool for the treated unit in question.



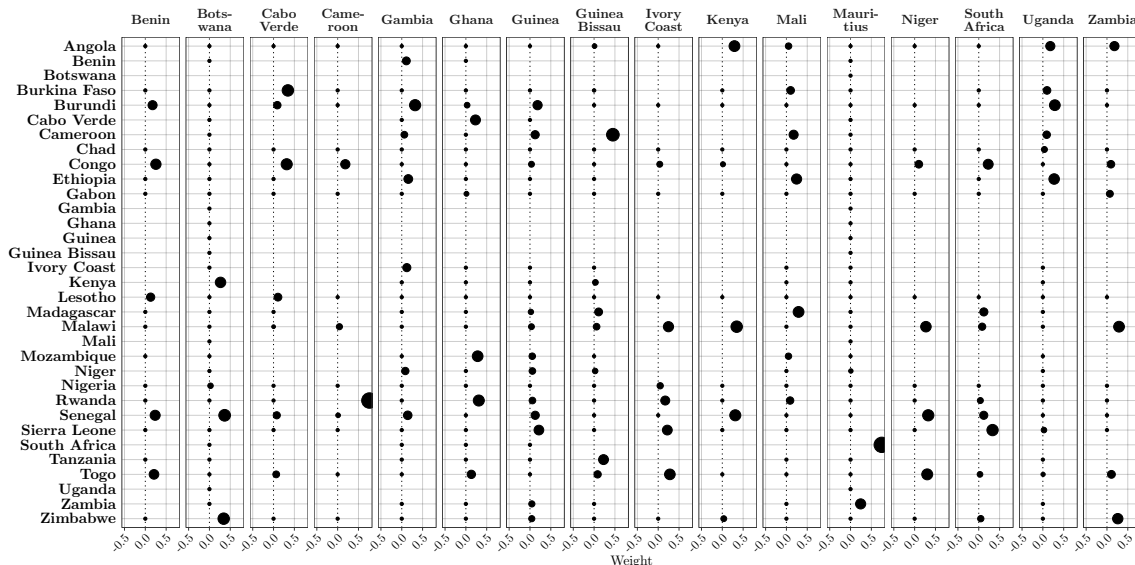
### S.7.3 Multiple Features

TSUS predicted effects in every period after liberalization ( $\tau_{ik}$ ).

Figure S.9: Time-specific unit-specific (TSUS) predicted effects in every period,  $\hat{\tau}_{ik}$ .



(a)  $Y_{it}(T_i)$  and  $\hat{Y}_{it}(\infty)$

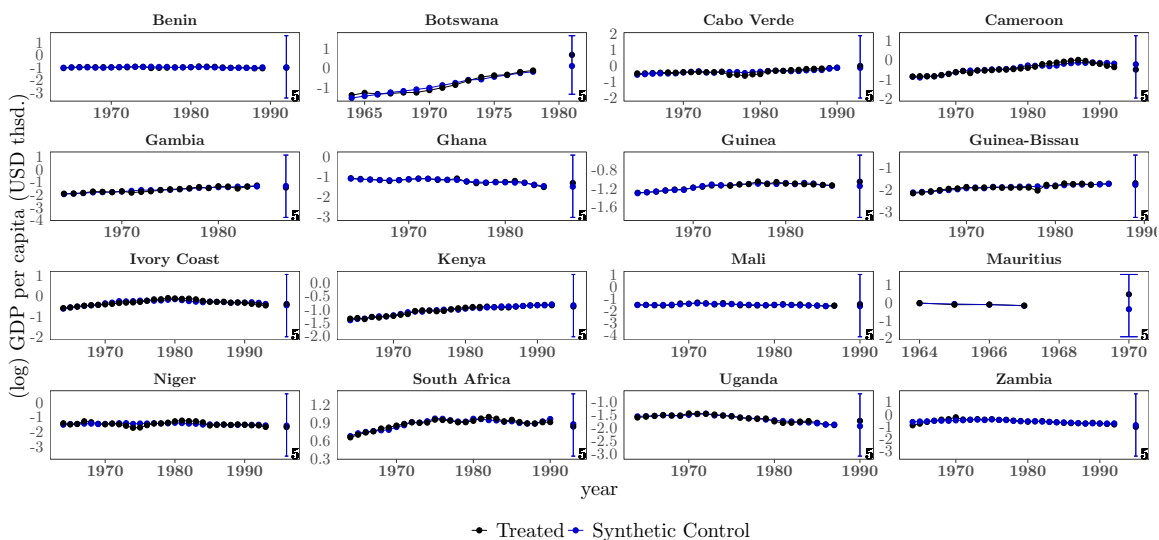


(b)  $\hat{w}_j^{[i]}, i \in \mathcal{E}, j \in \mathcal{N}$

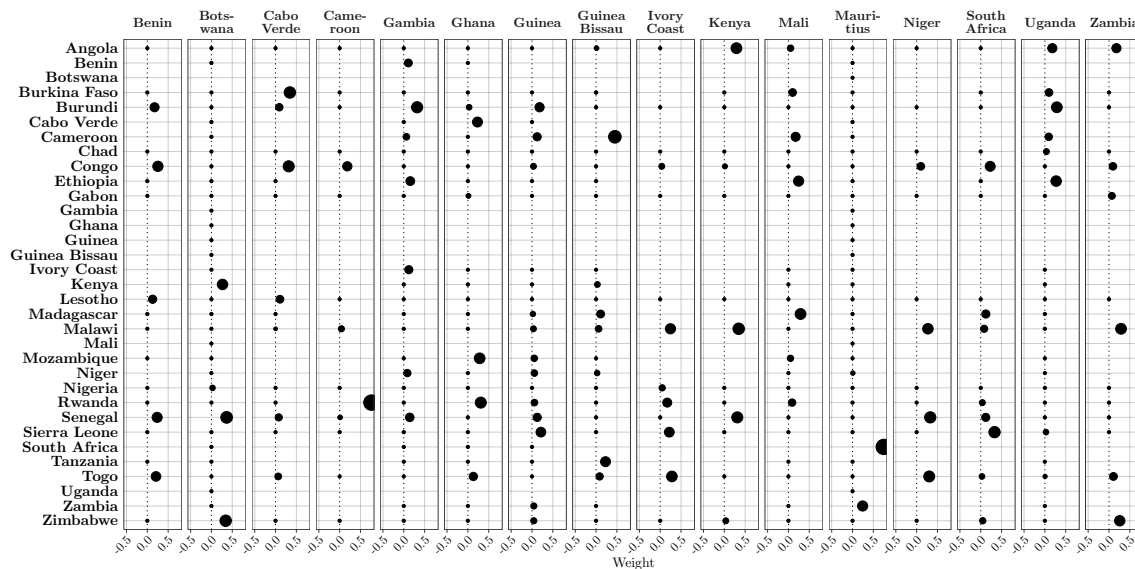
Notes: Panel (a): TSUS prediction for every country in each of five periods after treatment. Blue bars report 90% prediction intervals. In-sample uncertainty is quantified using 200 simulations, whereas out-of-sample uncertainty is quantified using sub-Gaussian bounds. Panel (b): each dot represents the weight that the donor (row) gets in forming the synthetic control for the treated unit (column). When there is no dot, it means that the unit was not part of the donor pool for the treated unit in question.

TAUS predicted effects, averaged over five years ( $\tau_i$ ).

Figure S.10: Time-averaged unit-specific (TAUS) predicted effects, averaged over five years,  $\hat{\tau}_i$ .



(a)  $Y_{it}(T_i)$  and  $\hat{Y}_{it}(\infty)$

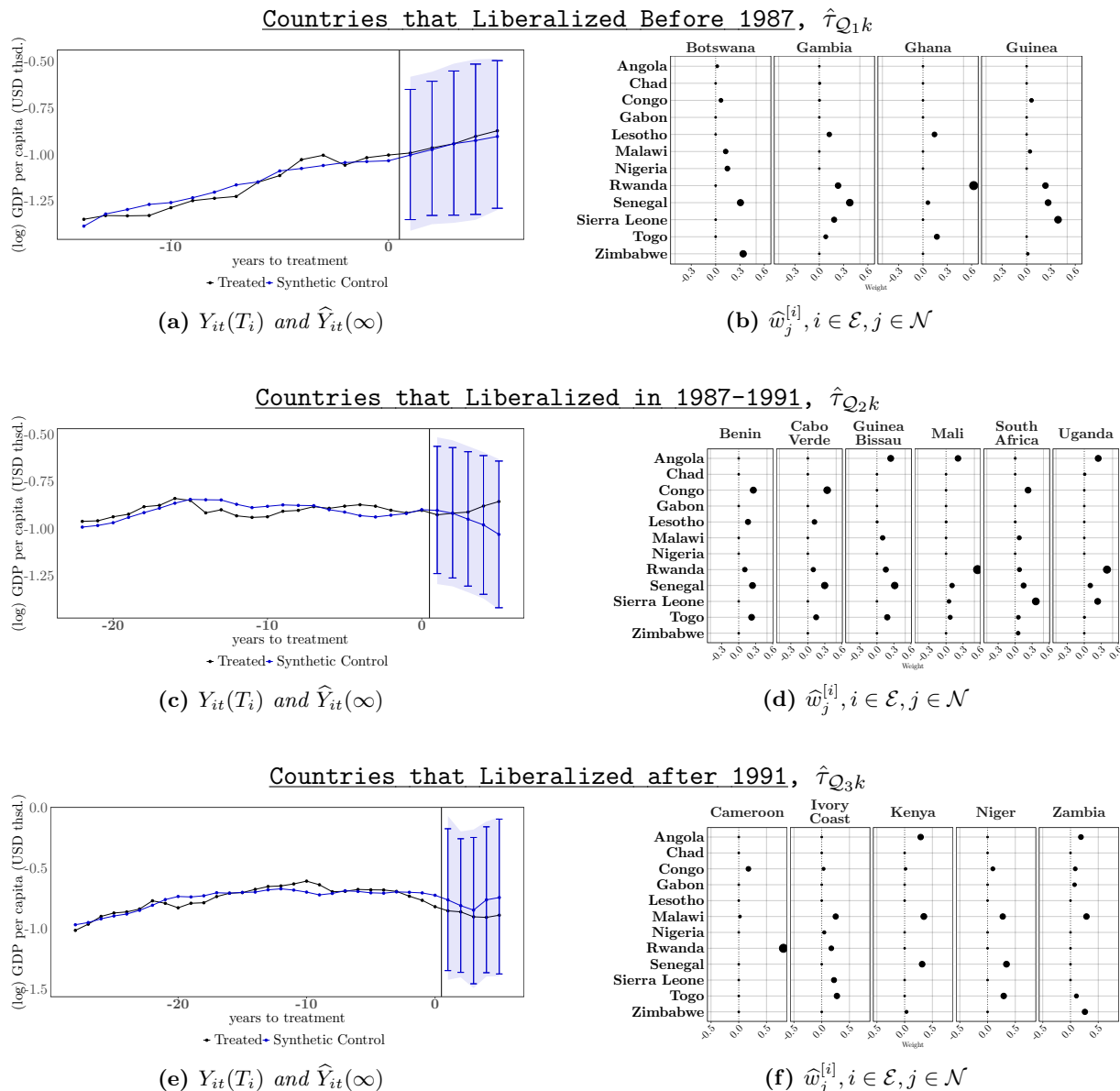


(b)  $\hat{w}_j^{[i]}, i \in \mathcal{E}, j \in \mathcal{N}$

Notes: Panel (a): TAUS prediction for every country averaged over the five periods following treatment (up to the year 2000). Blue bars report 90% prediction intervals. In-sample uncertainty is quantified using 200 simulations, whereas out-of-sample uncertainty is quantified using sub-Gaussian bounds. Panel (b): each dot represents the weight that the donor (row) gets in forming the synthetic control for the treated unit (column). When there is no dot, it means that the unit was not part of the donor pool for the treated unit in question.

TSUA predicted effects, averaged over countries that liberalized in each of three waves: before 1987, between 1987 and 1991, and after 1991 ( $\tau_{Q_1k}, \tau_{Q_2k}, \tau_{Q_3k}$ ).

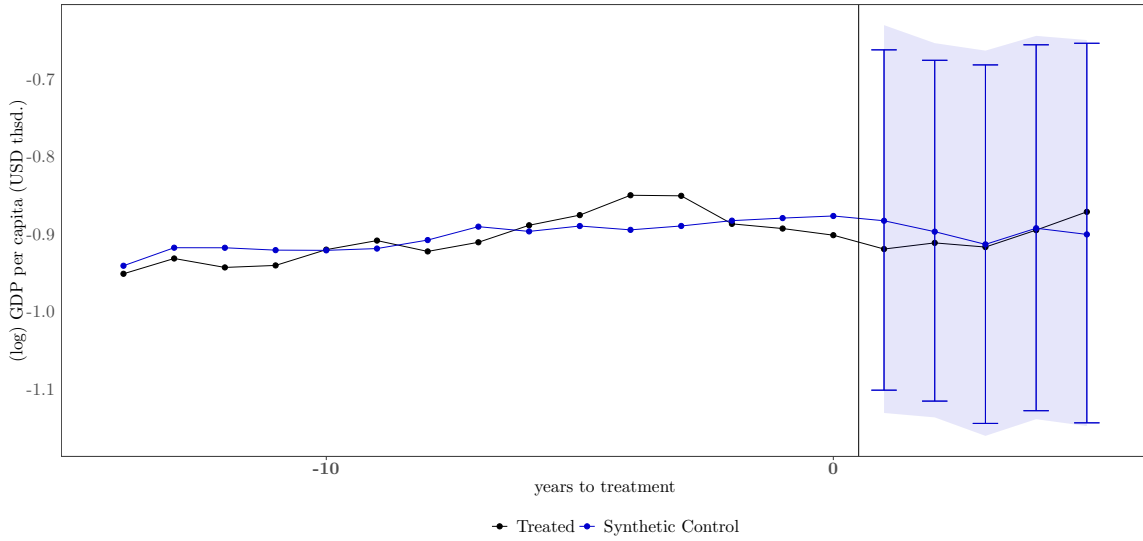
**Figure S.11:** Time-specific unit-averaged (TSUA) predicted effects in each period, averaged over three groups of countries.



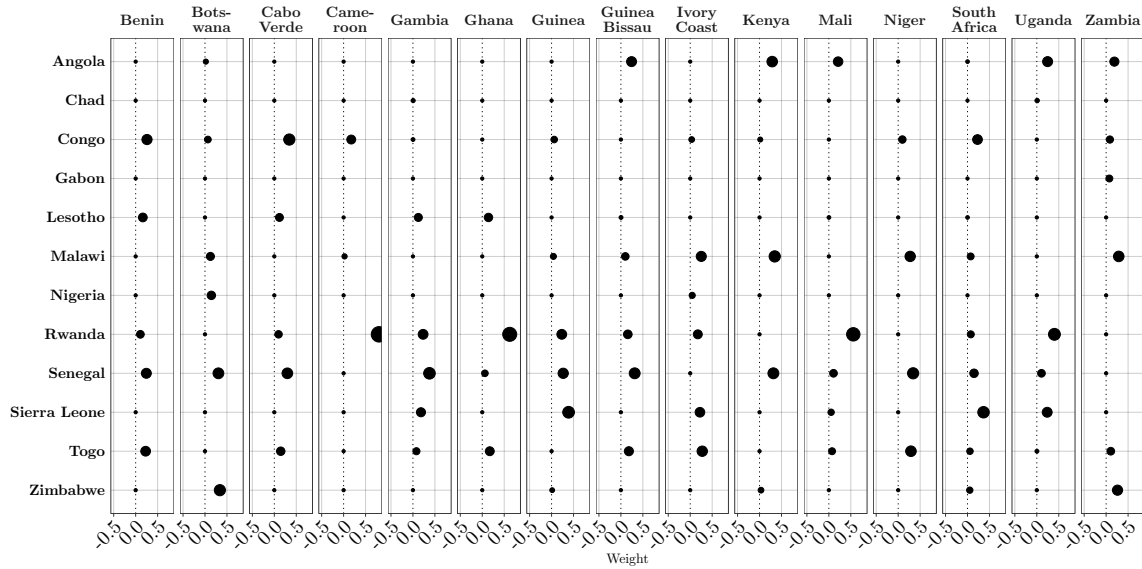
*Notes:* TSUA prediction in every period after treatment (up to five years), averaged over all countries that liberalized in each of three waves: before 1987 (Botswana, Gambia, Ghana, and Guinea), between 1987 and 1991 (Benin, Cabo Verde, Guinea-Bissau, Mali, South Africa, and Uganda), and after 1991 (Burkina Faso, Burundi, Cameroon, Ethiopia, Ivory Coast, Mozambique, Niger, Tanzania, and Zambia). Blue bars report 90% prediction intervals, whereas blue-shaded areas report 90% simultaneous prediction intervals. In-sample uncertainty is quantified using 200 simulations, whereas out-of-sample uncertainty is quantified using sub-Gaussian bounds. Panel (b): each dot represents the weight that the donor (row) gets in forming the synthetic control for the treated unit (column). When there is no dot, it means that the unit was not part of the donor pool for the treated unit in question.

TSUA predicted effects, averaged over all liberalized countries ( $\tau_{\mathcal{E}k}$ ).

**Figure S.12:** Time-specific unit-averaged (TSUA) predicted effect, averaged over all treated units,  $\widehat{\tau}_{\mathcal{E}k}$ .



(a)  $Y_{it}(T_i)$  and  $\widehat{Y}_{it}(\infty)$



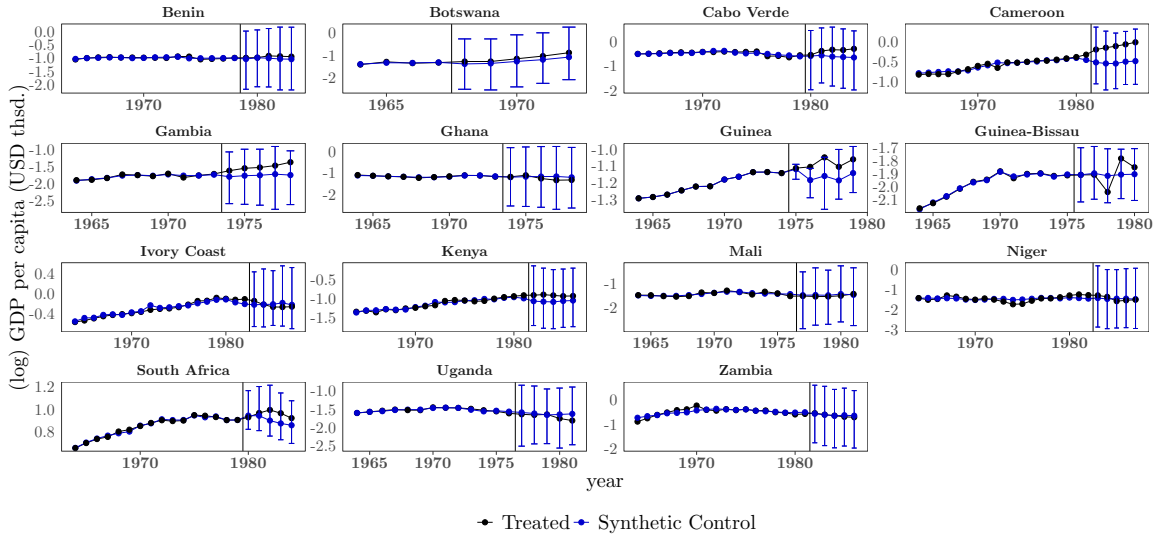
(b)  $\widehat{w}_j^{[i]}, i \in \mathcal{E}, j \in \mathcal{N}$

Notes: Panel (a): TSUA prediction in every period after treatment averaged over all the treated countries. Blue bars report 90% prediction intervals, whereas blue-shaded areas report 90% simultaneous prediction intervals. In-sample uncertainty is quantified using 200 simulations, whereas out-of-sample uncertainty is quantified using sub-Gaussian bounds. Panel (b): each dot represents the weight that the donor (row) gets in forming the synthetic control for the treated unit (column). When there is no dot, it means that the unit was not part of the donor pool for the treated unit in question.

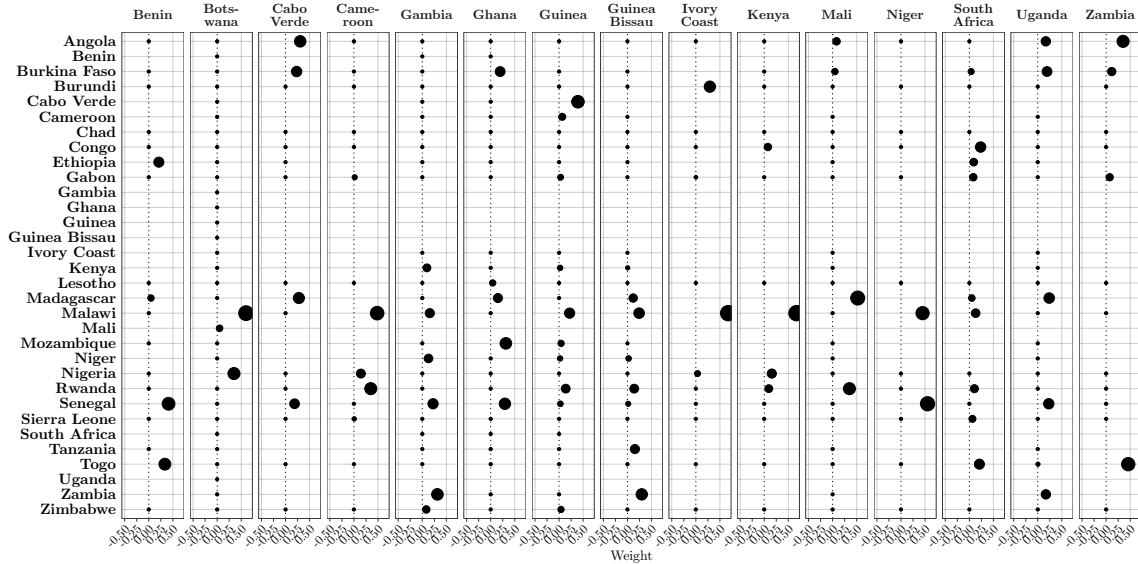
### S.7.4 Placebo Treatment Date

In this exercise, we set  $\tilde{T}_i = T_i - 11$  and conduct the same exercise as in the main text. TSUS predicted effects in every period after liberalization ( $\tau_{ik}$ ).

**Figure S.13:** *Time-specific unit-specific (TSUS) predicted effects in every period,  $\hat{\tau}_{ik}$ .*



(a)  $Y_{it}(T_i)$  and  $\hat{Y}_{it}(\infty)$

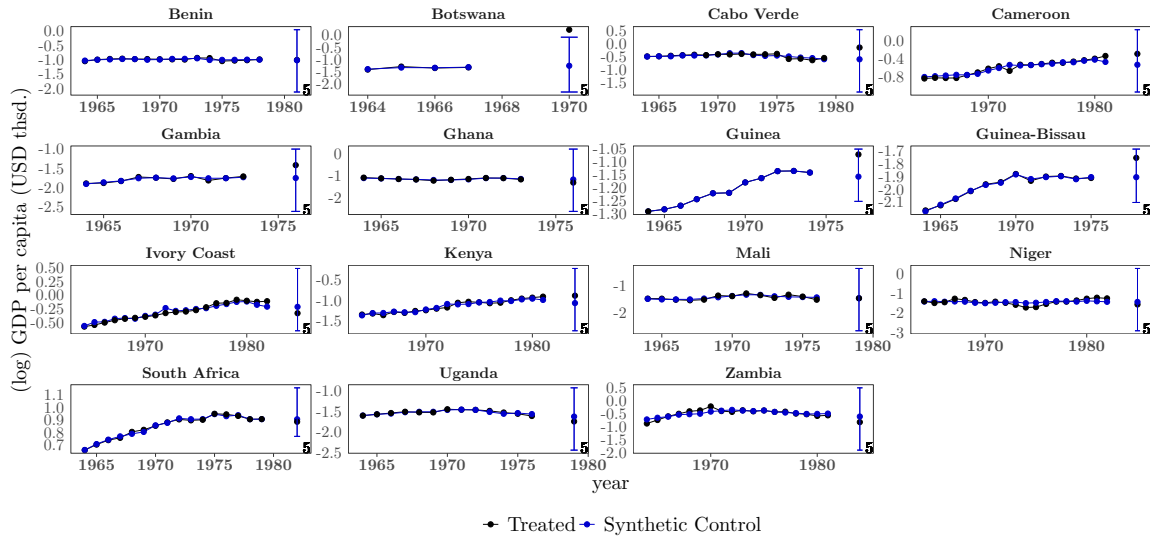


(b)  $\hat{w}_j^{[i]}, i \in \mathcal{E}, j \in \mathcal{N}$

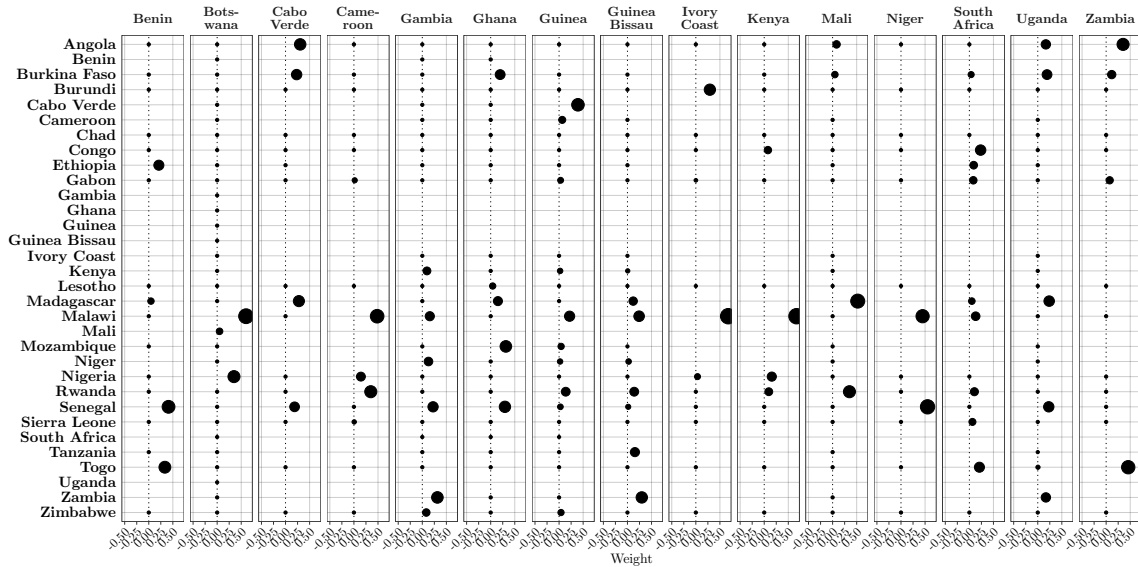
*Notes:* Panel (a): TSUS prediction for every country in each of five periods after treatment. Blue bars report 90% prediction intervals. In-sample uncertainty is quantified using 200 simulations, whereas out-of-sample uncertainty is quantified using sub-Gaussian bounds. Panel (b): each dot represents the weight that the donor (row) gets in forming the synthetic control for the treated unit (column). When there is no dot, it means that the unit was not part of the donor pool for the treated unit in question.

TAUS predicted effects, averaged over five years ( $\tau_i$ ).

**Figure S.14:** Time-averaged unit-specific (TAUS) predicted effects, averaged over five years,  $\hat{\tau}_i$ .



(a)  $Y_{it}(T_i)$  and  $\hat{Y}_{it}(\infty)$

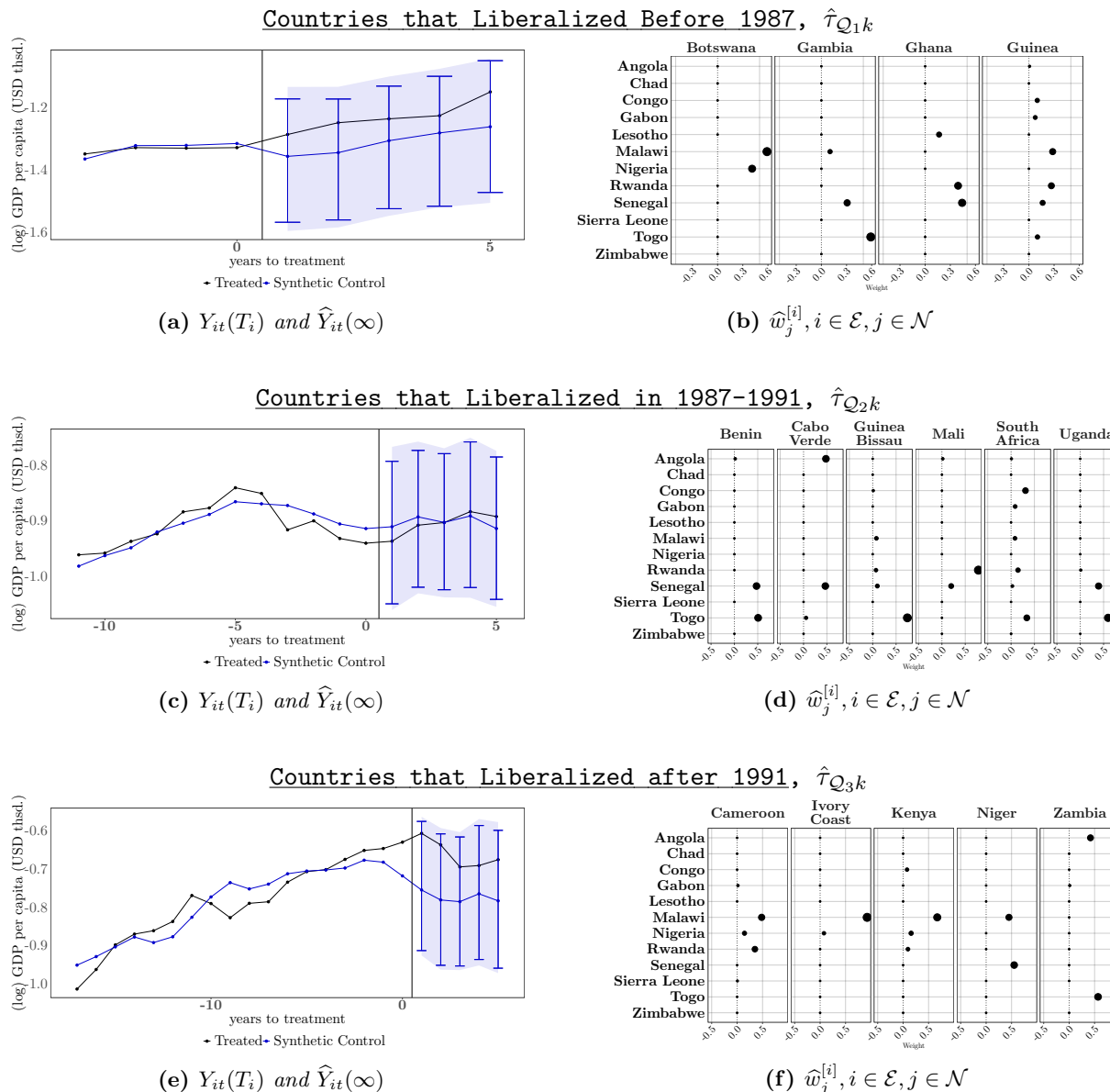


(b)  $\hat{w}_j^{[i]}, i \in \mathcal{E}, j \in \mathcal{N}$

*Notes:* Panel (a): TAUS prediction for every country averaged over the five periods following treatment (up to the year 2000). Blue bars report 90% prediction intervals. In-sample uncertainty is quantified using 200 simulations, whereas out-of-sample uncertainty is quantified using sub-Gaussian bounds. Panel (b): each dot represents the weight that the donor (row) gets in forming the synthetic control for the treated unit (column). When there is no dot, it means that the unit was not part of the donor pool for the treated unit in question.

TSUA predicted effects, averaged over countries that liberalized in each of three waves: before 1987, between 1987 and 1991, and after 1991 ( $\tau_{Q_1k}, \tau_{Q_2k}, \tau_{Q_3k}$ ).

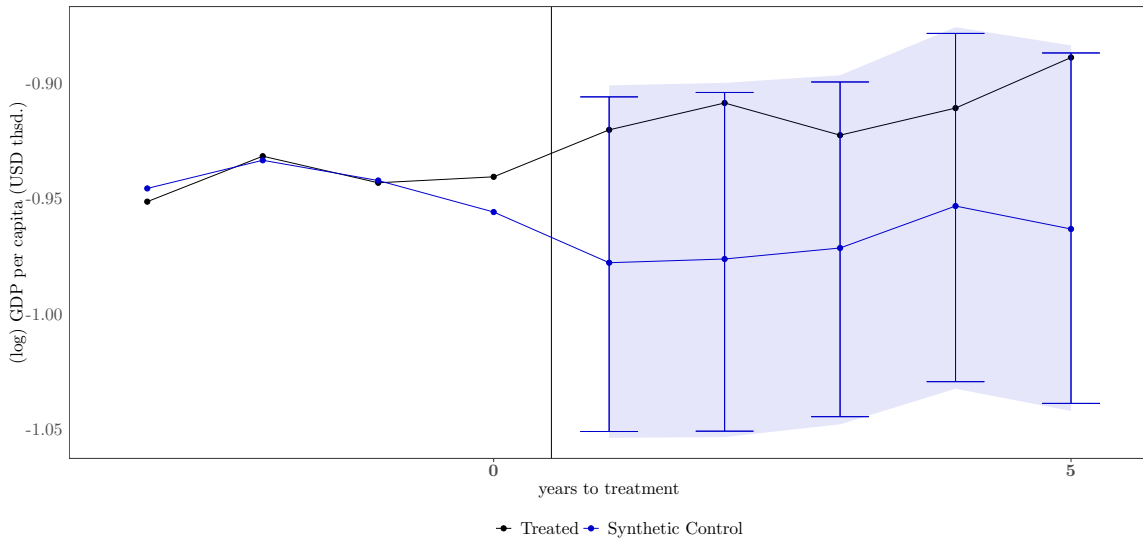
**Figure S.15:** Time-specific unit-averaged (TSUA) predicted effects in each period, averaged over three groups of countries.



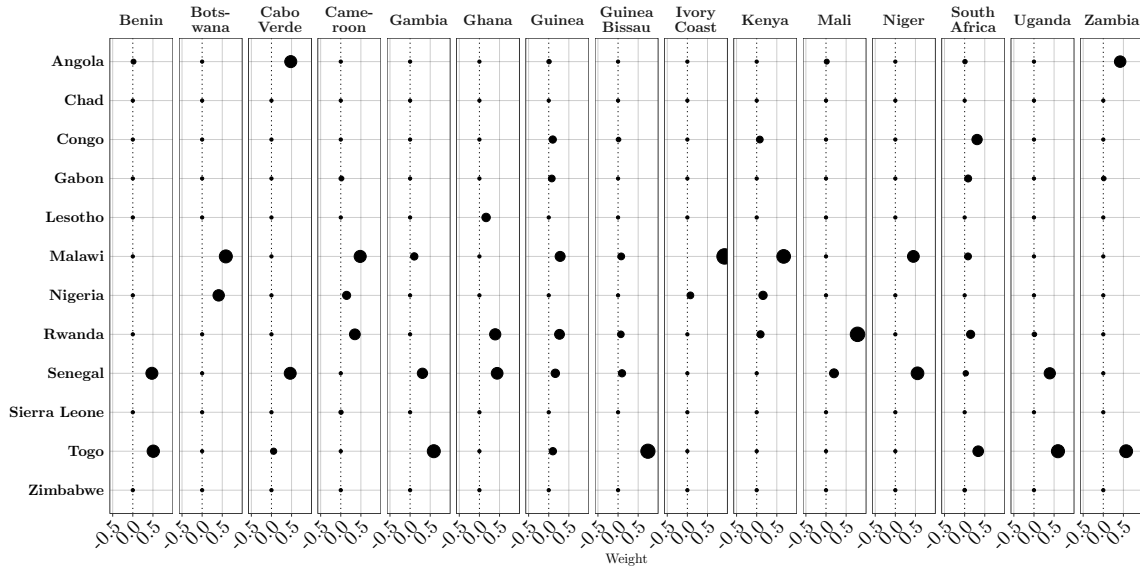
*Notes:* TSUA prediction in every period after treatment (up to five years), averaged over all countries that liberalized in each of three waves: before 1987 (Botswana, Gambia, Ghana, and Guinea), between 1987 and 1991 (Benin, Cabo Verde, Guinea-Bissau, Mali, South Africa, and Uganda), and after 1991 (Burkina Faso, Burundi, Cameroon, Ethiopia, Ivory Coast, Mozambique, Niger, Tanzania, and Zambia). Blue bars report 90% prediction intervals, whereas blue-shaded areas report 90% simultaneous prediction intervals. In-sample uncertainty is quantified using 200 simulations, whereas out-of-sample uncertainty is quantified using sub-Gaussian bounds. Panel (b): each dot represents the weight that the donor (row) gets in forming the synthetic control for the treated unit (column). When there is no dot, it means that the unit was not part of the donor pool for the treated unit in question.

TSUA predicted effects, averaged over all liberalized countries ( $\tau_{\mathcal{E}k}$ ).

**Figure S.16:** Time-specific unit-averaged (TSUA) predicted effect, averaged over all treated units,  $\widehat{\tau}_{\mathcal{E}k}$ .



(a)  $Y_{it}(T_i)$  and  $\widehat{Y}_{it}(\infty)$



(b)  $\widehat{w}_j^{[i]}, i \in \mathcal{E}, j \in \mathcal{N}$

*Notes:* Panel (a): TSUA prediction in every period after treatment averaged over all the treated countries. Blue bars report 90% prediction intervals, whereas blue-shaded areas report 90% simultaneous prediction intervals. In-sample uncertainty is quantified using 200 simulations, whereas out-of-sample uncertainty is quantified using sub-Gaussian bounds. Panel (b): each dot represents the weight that the donor (row) gets in forming the synthetic control for the treated unit (column). When there is no dot, it means that the unit was not part of the donor pool for the treated unit in question.

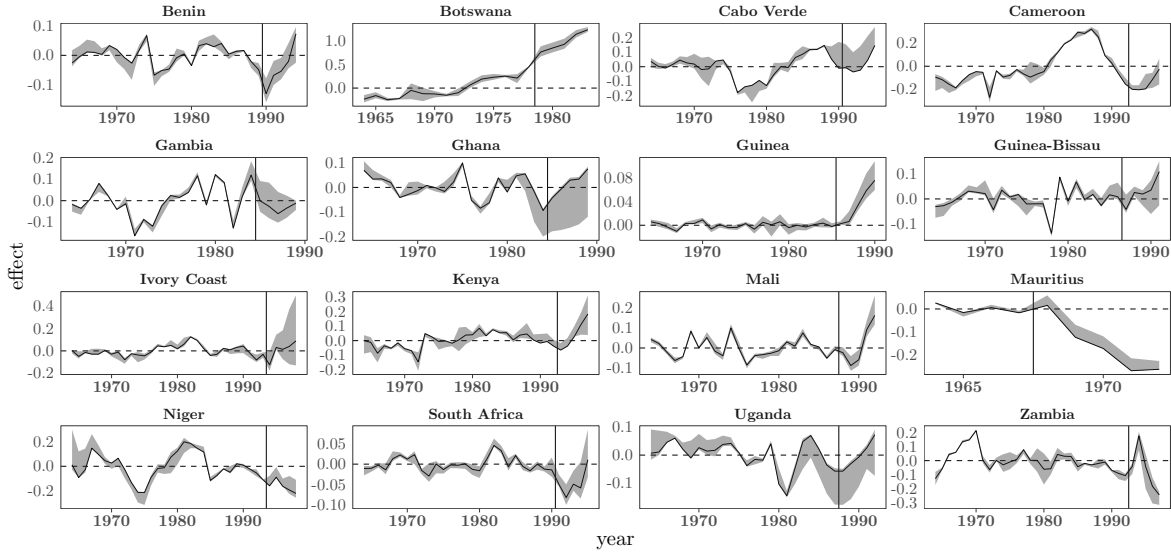


### S.7.5 Leave-one-donor-out

In this exercise, we remove with replacement one donor at a time from the donor pool and recompute our six predictands of interest.

TSUS predicted effects in every period after liberalization ( $\tau_{ik}$ ).

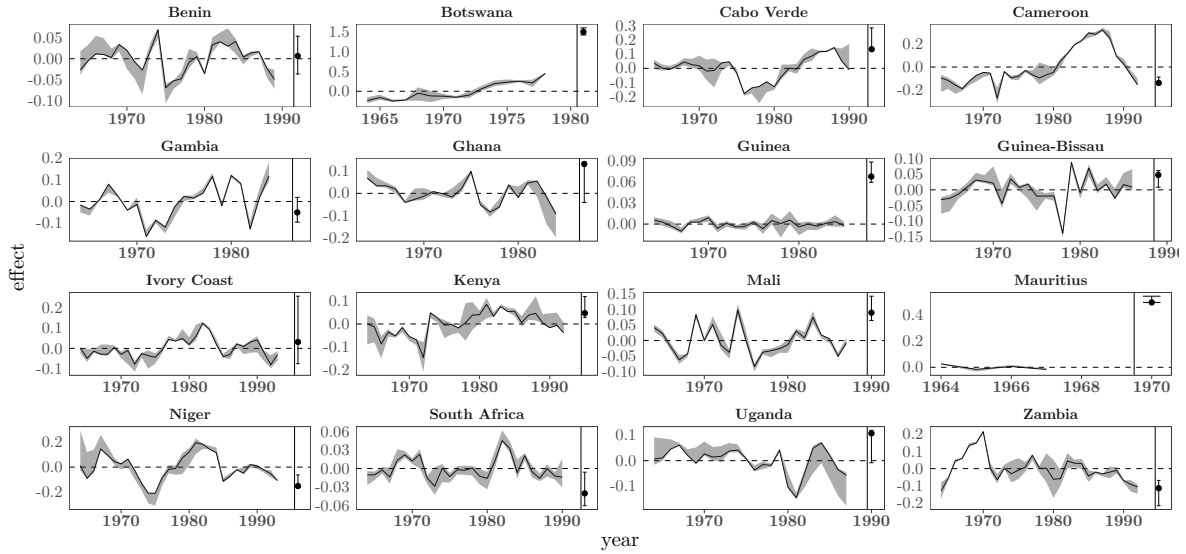
**Figure S.17:** *Time-specific unit-specific (TSUS) predicted effects in every period,  $\hat{\tau}_{ik}$ .*



*Notes:* The black solid line depicts the TSUS prediction for every country in the pre-treatment period and each of the five periods after treatment. Gray-shaded areas highlight the area between the lower and upper value of  $\hat{\tau}_{it}$  when leaving one of the donors out at a time.

TAUS predicted effects, averaged over five years ( $\tau_i$ ).

**Figure S.18:** Time-averaged unit-specific (TAUS) predicted effects, averaged over five years,  $\hat{\tau}_i$ .

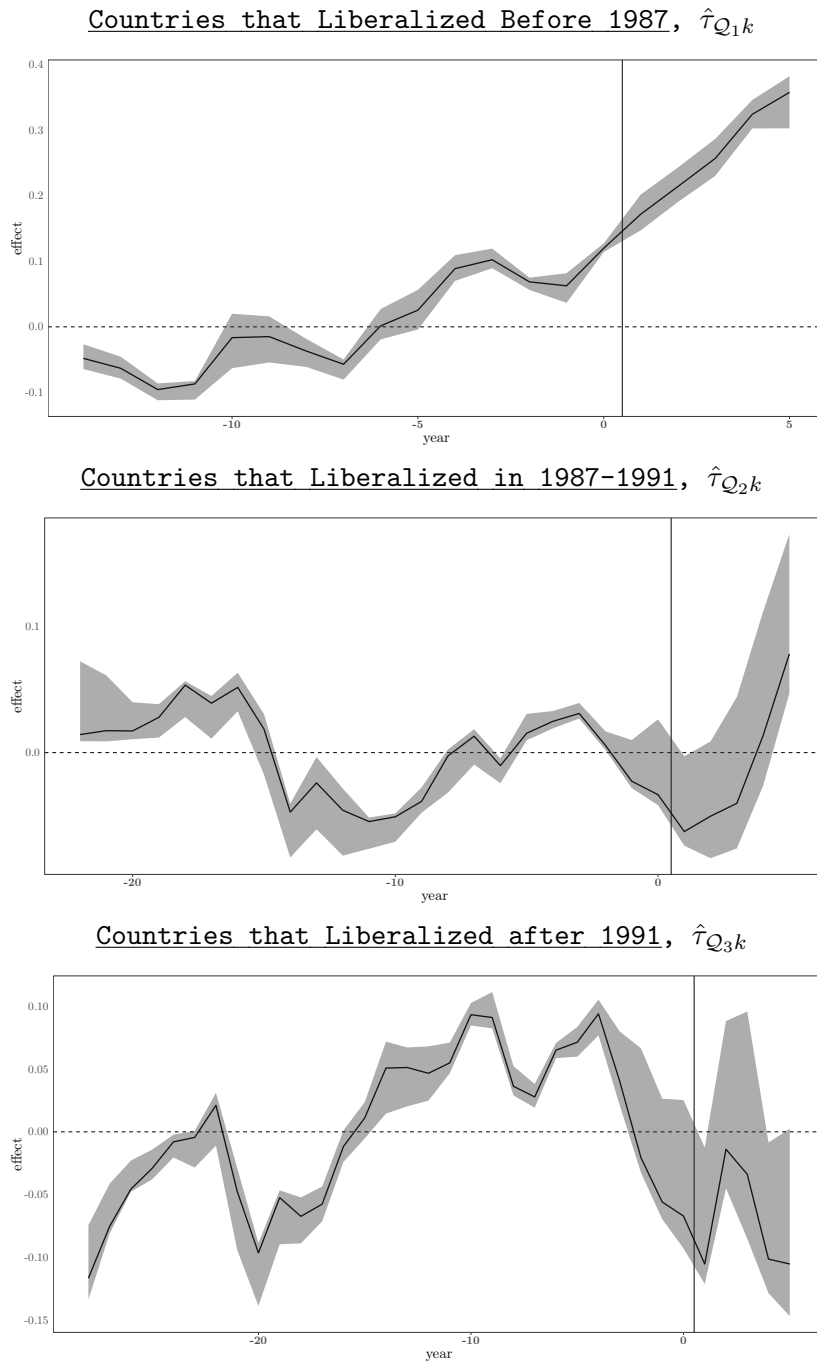


**Figure S.19:**  $Y_{it}(T_i)$  and  $\hat{Y}_{it}(\infty)$

*Notes:* The black solid line depicts the TSUS prediction for every country in the pre-treatment period and each of the five periods after treatment. Black vertical bars highlight the area between the lower and upper value of  $\hat{\tau}_i$  when leaving one of the donors out at a time.

TSUA predicted effects, averaged over countries that liberalized in each of three waves: before 1987, between 1987 and 1991, and after 1991 ( $\tau_{Q_1k}, \tau_{Q_2k}, \tau_{Q_3k}$ ).

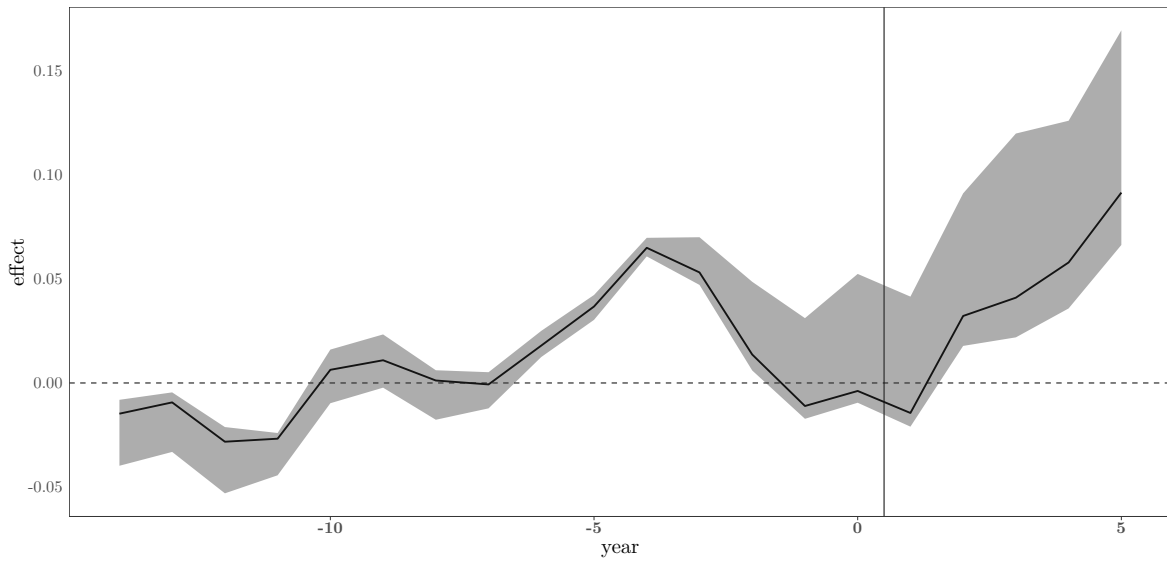
**Figure S.20:** *Time-specific unit-averaged (TSUA) predicted effects in each period, averaged over three groups of countries.*



*Notes:* The black solid line depicts the TSUA prediction in every period before and after treatment (up to five years), averaged over all countries that liberalized in each of three waves: before 1987 (Botswana, Gambia, Ghana, and Guinea), between 1987 and 1991 (Benin, Cabo Verde, Guinea-Bissau, Mali, South Africa, and Uganda), and after 1991 (Burkina Faso, Burundi, Cameroon, Ethiopia, Ivory Coast, Mozambique, Niger, Tanzania, and Zambia). Gray-shaded areas highlight the area between the lower and upper value of  $\hat{\tau}_{Q_j t}$ ,  $j = 1, 2, 3$ , when leaving one of the donors out at a time.

TSUA predicted effects, averaged over all liberalized countries ( $\tau_{\mathcal{E}k}$ ).

**Figure S.21:** *Time-specific unit-averaged (TSUA) predicted effect, averaged over all treated units,  $\hat{\tau}_{\mathcal{E}k}$ .*



*Notes:* The black solid line depicts the TSUA prediction in every period before and after treatment averaged over all the treated countries. Gray-shaded areas highlight the area between the lower and upper value of  $\hat{\tau}_{\mathcal{E}t}$  when leaving one of the donors out at a time.

## References

- Billmeier, A., and Nannicini, T. (2013), “Assessing Economic Liberalization Episodes: A Synthetic Control Approach,” *Review of Economics and Statistics*, 95, 983–1001.
- Boyd, S., and Vandenberghe, L. (2004), *Convex Optimization*, Cambridge University Press.
- Bratton, M., and Van de Walle, N. (1997), *Democratic experiments in Africa: Regime transitions in comparative perspective*, Cambridge university press.
- Cattaneo, M. D., Feng, Y., Palomba, F., and Titiunik, R. (2024), “`scpi`: Uncertainty Quantification for Synthetic Control Methods,” *Journal of Statistical Software*.
- Cattaneo, M. D., Feng, Y., and Titiunik, R. (2021), “Prediction Intervals for Synthetic Control Methods,” *Journal of the American Statistical Association*, 116, 1865–1880.
- Chang, Y., Park, J. Y., and Song, K. (2006), “Bootstrapping Cointegrating Regressions,” *Journal of Econometrics*, 133, 703–739.
- Ferman, B., and Pinto, C. (2021), “Synthetic Controls with Imperfect Pre-Treatment Fit,” *Quantitative Economics*.
- Hoerl, A. E., Kannard, R. W., and Baldwin, K. F. (1975), “Ridge Regression: Some Simulations,” *Communications in Statistics-Theory and Methods*, 4, 105–123.
- Raič, M. (2019), “A Multivariate Berry–Esseen Theorem with Explicit Constants,” *Bernoulli*, 25, 2824–2853.
- Ravishanker, N., Hochberg, Y., and Melnick, E. L. (1987), “Approximate Simultaneous Prediction Intervals for Multiple Forecasts,” *Technometrics*, 29, 371–376.
- Sachs, J. D., Warner, A., Åslund, A., and Fischer, S. (1995), “Economic Reform and the Process of Global Integration,” *Brookings Papers on Economic Activity*, 1995, 1–118.